



**Faculty of Mechanical Engineering**

**AXIAL CRUSHING OF THIN-WALLED TUBE WITH HOLE UNDER  
QUASI-STATIC LOADING**

**Minah Mohammed Fareed Abd-A Al-Dabbagh**

**Master of Mechanical Engineering  
(Applied Mechanics)**

**2016**

**AXIAL CRUSHING OF THIN-WALLED TUBE WITH HOLE UNDER QUASI-  
STATIC LOADING**

**MINAH MOHAMMED FAREED ABD-A AL-DABBAGH**

**A dissertation submitted  
in fulfillment of the requirements for the degree of master of Mechanical Engineering  
(Applied Mechanics)**


**Faculty of Mechanical Engineering**

**UNIVERSITI TEKNIKAL MALAYSIA MELAKA**

**2016**

## DECLARATION

I declare that this dissertation entitles “Axial Crushing of Thin-Walled Tube with Hole under Quasi-Static Loading” is the result of my own research except as cited in the references. The dissertation has not been accepted for any degree and is not concurrently submitted in the candidature of any other degree.

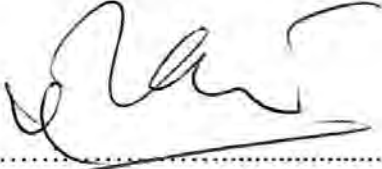
Signature :  .....

Name : MINAH MOHAMMED FAREED ABD-A AL-DABBAGH

Date: : 4/9/2016 .....

## APPROVAL

I hereby declare that I have read this dissertation and in my opinion this dissertation is sufficient in terms of scope and quality for the award of Master of Mechanical Engineering (Applied Mechanics).

Signature :   
Supervisor Name : PROF. DR. MD RADZAI BIN SAID  
Date: 5/9/2016

PROFESOR DR. MD RADZAI BIN SAID  
Fakulti Kejuruteraan Mekanikal  
Universiti Teknikal Malaysia Melaka, Hang Tuah Jaya,  
76100 Durian Tunggal, Melaka

## DEDICATION

Alhamdulillah, all praises to Allah for the strengths and His blessing in completing this search.

To the great prophet Mohammed (Allah peace be upon him) ... a prophet of mercy and the light of the Worlds

To whom God has given the prestige and dignity... who taught me to tender without waiting... to whom I bear his name proudly... my father's beloved (God's mercy), I ask God Almighty to have mercy and to reward him paradise, My beloved mother, which is my gates to paradise, she removes all my worries by her smile. I did not get to what I am now without her duaa, I pray for Almighty God to save and protect my dear mother

All the love... To my dear husband, to who helped me to achieve my dream step by step when he gave me the love and time, God rewards you. My beloved kids (Mustafa and Marah) I ask the Almighty God to save and protect both of them for me.

To my beloved sister (Zena) and her daughters (Aya and Fatima), your duaa, love and support that helped me and meant a lot to me. To my dearest brothers (Zaid, Mokhallad, and Mustafa), I ask God to keep and protect both of them for me.

For all friends especially (Jumadi Chuli) who have encouraged me during my study, thank you all.

## ABSTRACT

Thin-walled tube is one of the energy absorbing structure utilized to dissipate energy and increase the efficiency of crashworthiness. During the accident, thin-walled tube dissipates the kinetic energy of the structure and converts it into other form of energy. Thus, this gives enough energy dissipation before hitting the human. This study examines the circular and square thin-walled tubes of mild steel subjected to axial crushing test by using Instron machine. These tubes include imperfection (round holes) located at three different locations. The theoretical results obtained from mathematical equations for the circular and square tubes crushing have been compared to the experimental results and a good agreement has been achieved between the theoretical and experimental results. The analysis of load-displacement characteristics includes the peak load, energy absorption capacity, mean crushing load, crush force efficiency (CFE), and specific energy absorption (SEA) results. The diameter, location and number of the holes were varied to investigate the effect of these parameters to the load-displacement characteristics. The location of round hole is located in 3 different level in the tube. As a result, the circular tube is capable of providing better decrease peak load and higher absorbed energy compared to the square tube. It was found that the better specimen is the circular tube with multi-hole, due to it has the excellent result in decrease the peak load reached to 16 %, it was concluded that value of the peak load is optimum in circular thin-walled tube. While the value of energy absorption slightly decreases in all specimens with holes compared with tube without hole. The location of holes in circular tube has the effect on the type of deformation. However, it does not affect the deformation in the square tube the location unaffected on the deformation. At the end, the modifications performed on the original tube shows an improvement in the load-displacement characteristics. The information obtained in this study will serve as a guide to better design the thin-walled tube in the future.

## ABSTRAK

Tiub berdinding nipis adalah salah satu menyerap struktur tenaga yang digunakan untuk menghilangkan tenaga dan meningkatkan kecekapan crashworthiness. Semasa pelanggaran itu, tiub berdinding nipis menyebarkan tenaga kinetik struktur dan menukarkan kepada bentuk tenaga yang lain. Dengan ini, tenaga dapat terserap sebelum melanggar manusia. Kajian ini melihat tiub berdinding nipis bulat dan persegi keluli lembut yang dikenakan bebanan paksi oleh mesin Instron. Tiub-tiub ini juga ditebuk dengan lubang bulat pada 3 lokasi yang berbeza. Keputusan teori yang diperolehi daripada persamaan matematik untuk tiub bulat dan tiub segi tepat dibandingkan dengan keputusan eksperimen dan didapati ia hampir sama. Analisa ciri-ciri beban-anjakan ini adalah termasuk beban puncak, kapasiti penyerapan tenaga, beban purata kecekapan kuasa menghancurkan (CFE) dan penyerapan tenaga tentu (SEA). Garispusat, lokasi dan bilangan lubang diubah untuk melihat kesan parameter ini dengan ciri-ciri beban-anjakan. Lokasi lubang bulat diletakkan pada 3 paras yang berbeza-beza. Hasilnya, tiub bulat mampu menyediakan penurunan beban puncak yang lebih baik dan tenaga yang diserap lebih tinggi berbanding dengan tiub persegi. Kajian ini menjumpai bahawa spesimen tiub bulat dengan pelbagai lubang adalah lebih baik dan boleh menurunkan beban puncak sehingga 16%. Walaubagai pun, nilai serapan tenaga akan berkurangan. Lokasi lubang pada tiub bulat mempunyai kesan terhadap jenis ubah bentuk. Walau bagaimanapun, ia tidak memberi kesan kepada perubahan bentuk dalam tiub persegi lokasi terjejas pada ubah bentuk. Pada akhirnya, pengubahsuaian dilakukan ke atas tiub asal menunjukkan peningkatan dalam ciri-ciri beban-anjakan. Maklumat yang diperolehi dalam kajian ini akan menjadi panduan untuk lebih baik mereka bentuk tiub berdinding nipis pada masa hadapan.

## ACKNOWLEDGMENT

First my praise is to the Almighty “Allah”, on whom we ultimately depend. Then, I would like to sincerely thank my supervisor Prof. Dr. Md Radzai Bin Said for his guidance, advices, and support. Without his valuable assistance, this work would not have been completed. I am also indebted to my friends for their contributions. My acknowledgment also goes to UTeM university, and especially Faculty of Mechanical Engineering.

Most importantly, I am forever grateful my family who understands the importance of this work, none of this would have been possible without their patience and help.



## TABLE OF CONTENTS

	PAGE
<b>DECLARATION</b>	
<b>DEDICATION</b>	
<b>ABSTRACT</b>	<b>i</b>
<b>ABSTRAK</b>	<b>ii</b>
<b>ACKNOWLEDGMENT</b>	<b>iii</b>
<b>TABLE OF CONTENTS</b>	<b>iv</b>
<b>LIST OF TABLES</b>	<b>vii</b>
<b>LIST OF FIGURES</b>	<b>viii</b>
<b>LIST OF ABBREVIATIONS</b>	<b>xii</b>
<b>LIST OF SYMBOLS</b>	<b>xiii</b>
<b>CHAPTER</b>	
<b>1. INTRODUCTION</b>	<b>1</b>
1.1 Safety and motivation	1
1.2 Problem statement	5
1.3 Objective of study	6
1.4 Significance of study	6
1.5 Scope	7
1.6 Dissertation outline	7
<b>2. LITERATURE REVIEW</b>	<b>9</b>
2.1 Crashworthiness	9
2.1.1 Crash Characteristics	10
2.1.2 Measuring of crashworthiness	11
2.1.3 Types of accidents	12
2.1.3.1 Frontal automobile accidents	12
2.1.3.2 Side automobile accidents	12
2.1.3.3 Rear automobile accidents	13
2.1.3.4 Rollover automobile accidents	13
2.1.4 Structural required to crashworthiness	14
2.2 Analysis of axial crushing	15
2.2.1 Quasi-static under axial loading	15
2.2.2 Types of modes under axial crushing	15
2.2.2.1 Global bending or Euler deformation	16
2.2.2.2 Progressive buckling	17
2.2.2.3 Catastrophic crushing	27
2.3 Load-displacement characteristic	27
2.3.1 Mechanism of Load-displacement curve	28
2.3.2 Theoretical analysis of crush mechanism	29
2.3.2.1 Energy absorption	29
2.3.2.2 Peak load	31
2.3.2.3 Mean load	32
2.3.2.4 Crush force efficiency	38
2.3.2.5 Specific energy absorption	39
2.3.2.6 Energy efficiency	39

2.3.2.7	Plastic folding	39
2.4	Efficient tubular structures	40
2.4.1	Thin-walled tube	41
2.4.2	Tube with imperfection as initiator	41
2.5	Summery	50
<b>3.</b>	<b>METHODOLOGY</b>	<b>51</b>
3.1	Introduction	51
3.2	Flow chart of methodology	52
3.3	Material selection and preparation of specimen	53
3.3.1	Material of specimen (Mild steel)	53
3.3.2	Determination of dimensions of circular and square tubes	53
3.3.3	Cutting	58
3.3.4	Smoothing of the surface	59
3.3.5	Specimens failure in preliminary work	61
3.3.6	The weight of specimens	63
3.3.7	Tensile test	68
3.4	Experimental work	76
3.4.1	Circular thin- walled tube	81
3.4.1.1	Without holes	81
3.4.1.2	With holes	82
3.4.2	Square tube	85
3.4.2.1	Without holes	85
3.4.2.2	With holes	86
3.5	Plastic folding measurement	89
3.5.1	Cutting of the crushed specimen	89
3.5.2	Draw a grid on the sample	90
<b>4.</b>	<b>RESULTS AND DISCUSSION</b>	<b>92</b>
4.1	Introduction	92
4.2	Types of deformation	93
4.2.1	Deformation of circular tube with and without holes	93
4.2.1.1	Regular deformation.	93
4.2.1.2	Irregular deformation	96
4.2.2	Deformation of square tube with and without holes	99
4.2.3	Deformation of new design	102
4.2.3.1	Circular tube with multi holes	102
4.2.3.2	Square tube with multi holes	105
4.3	Comparison between the theoretical and experimental results	109
4.3.1	Comparison between theoretical and experimental results of circular tube	109
4.3.2	Comparison of experimental results of circular tube with and without holes	111
4.3.3	Comparison between theoretical and experimental results of square tube	115
4.3.4	Comparison of experimental results of square tube with and without holes	116
4.3.5	Comparison between the experimental results of circular and square tube	121

<b>5. CONCLUSION</b>	<b>123</b>
5.1 Introduction	123
5.2 Conclusion	123
5.3 Future Research	125
<b>REFERENCES</b>	<b>126</b>

## LIST OF TABLES

TABLE	TITLE	PAGE
3.1	The designations of circular tube	57
3.2	The designations of square tube	58
3.3	The weight of circular tubes without and with holes of circular tube	67
3.4	The weight of square tubes without and with holes of circular tube	68
3.5	Dimensions of specimens depend on ASTM E8 (a) circular (b) square	69
4.1	(a) The different between the theoretical and experimental results of circular thin-walled tube. (5 mm holes & without hole)	110
4.2	The different between experimental results of circular tube with and without holes	114
4.3	(a) The different between theoretical and experimental results of square thin-walled tube (without holes and 5 mm)	115
4.4	The experimental results of square tube with and without holes	120

## LIST OF FIGURES

FIGURE	TITLE	PAGE
1.1	Percentage of damage direction due to accident (How to safety, 2014).	2
1.2	Transfer of collision energy in car structure (Crash box element in Honda CR-Z, 2010).	2
1.3	Frontal rails tubes put in crash distance (Qi Chang et al., 2012)	3
1.4	Design aims for good structure of vehicle	4
2.1	Sketch for modes of deformation under axial crushing.	16
2.2	Global bending (Euler) deformation mode. (a) Circular tube (Seitzberger, et al. 1997) (b) Square tube (Arnold and Altenhof, 2004) (c) localization of plastic hinges under compressive load (Abramowicz and Jones, 1997).	17
2.3	Concertina mode under axial buckling (Huang, 2003)	18
2.4	Diamond mode under axial crushing (Marsolek and Reimerdes, 2004)	19
2.5	Mixed-mode started concertina and completed diamond (Toksoy et al., 2004)	19
2.6	Various kinematic models presented by different authors in the past a) Alexander, 1960 b) Abramowicz, 1984a c) Wierzbicki et al., 1992 d) Grzebieta, 1990 e) Gupta and Velmurugan, 1997	20
2.7	Straight element of Grzebieta's model	23
2.8	Deformation mode of square tube (a) non-compact mode (b) Symmetric or compact mode	24
2.9	Square tube crushed progressively (a) the first model of kinematically admissible folding (Wierzbicki and Abramowicz, 1983) (b) deformation mechanisms of super folding element (Abramowicz, 2003)	25
2.10	Extensional mode of thick square tube (Abramowicz and Jones, 1984a)	26
2.11	Load-displacement characteristics of an axial collapse (Paul Du Bois, 2004)	28

2.12	Load-displacement curve under axial loading (Kruss and laananen, 1994)	29
2.13	Circular tube with holes discontinues (a) Mild steel (b) Aluminum tube (Gupta and Gupta, 1993)	42
2.14	Square tube with dent as initiators (Lee et al., 1999)	43
2.15	Aluminum tubes with various types of discontinuities (Cheng et al., 2006)	44
2.16	Thin-walled tube Mild steel with windows under axial crushing (Song et al., 2013)	44
2.17	Mild Steel tubes with multi-round holes (a) experimental work (b) simulation work (Bodlani et al., 2009)	45
2.18	Mild steel square tube with round hole (a) experimental work (b) numerical simulation. (Mamalis et al., 2009)	46
2.19	Circular tube with imperfections (a) with grooves (b) with round holes (Elyasi et al., 2014)	47
2.20	Circular and square tube with holes discontinues under axial crushing (Subramaniyan et al., 2014)	48
2.21	Square tube with circle hole under axial crushing (a) experimental work (b) simulation work (Szwedowicz et al., 2014)	48
2.22	Square tube Mild steel with various types of imperfections (a) square (b) circle (c) elliptical (Sameer et al., 2015).	49
2.23	Aluminum and Steel circular tube with multi holes (Elyasi et al., 2016)	50
3.1	Specimens of circular tube drew in SoldWork (a) without holes (b) with two holes in top (c) with two holes in middle (d) with two holes in bottom	54
3.2	Specimens of square tube drew in SoldWork (a) without holes (b) with two holes in top (c) with two holes in middle (d) with two holes in bottom	54
3.3	Circular tube with multi holes.	55
3.4	Square tube with multi holes.	55
3.5	Measure the distance between the end of tube and the center of plastic folding (a) square tube (b) circular tube	56
3.6	Cutting the circular and square tube using cutter machine	59
3.7	Smoothing the surface of specimen using lathe machine	60
3.8	Removal of undesirable pieces	60
3.9	Smooth surface of square tube by using milling machine	61
3.10	Remove small pieces undesirable from square tube	61
3.11	Circular and square tube failure during preparation	63

3.12	Weight measurement of circular and square tube before drilling the holes	64
3.13	Circular tubes with weight written on them before drilling the holes	64
3.14	Laterally drilling holes in opposite side (a) circular tube (b) square tube	65
3.15	Images of (a) Circular tubes (b) Square tubes (c) Circular and square tubes with multi holes	67
3.16	Schematic of dog bone specimen (ASTM E8, 2013) (a) circular tube (b) square tube	69
3.17	Drawn dog bone specimen by using SolidWorks software (a) circular tube (b) square tube	71
3.18	Dog bone specimens of tensile test after cutting by using CNC machine (a) circular (b) square	72
3.19	Fix the dog bone specimen in Instron machine by using grips (a) circular tube (b) square tube	73
3.20	The waist started on the specimen (a) circular tube (b) square tube	74
3.21	The dog bone specimens after the fracture (a) and (c) Circular specimen (b) and (d) Square specimen	75
3.22	Tensile graphs of (a) Two circular specimen (b) Two square specimen	76
3.23	Universal Instron machine model 5585	77
3.24	Universal dynamic Instron machine model 8802	78
3.25	Steps of fixing the specimen in the center of the flat platen	78
3.26	Insert raw data in Exile software (a) All data (b) drew load-displacement curve	79
3.27	Steps of Origin program 9.1 (a) Plot-area (b) Get black area (c) Integrate black area (d) Amount of energy absorption	80
3.28	The camera of mobile fixed in front of the specimen	81
3.29	Circular tubes without holes during experiment test	82
3.30	Circular tube with 5 mm holes during test (a) Holes in top (b) Holes in middle (c) Holes in bottom	83
3.31	Circular tube with holes 10 mm during experiment work (a) holes in top (b) holes in middle (c) holes in bottom	84
3.32	Circular tube with multi holes during test (a) Specimen one (b) Specimen two	85
3.33	Square tube without holes during experiment work (a) Specimen one (b) Specimen two	86
3.34	Square tube with two holes 5 mm during test (a) Top (b) Middle (c) Bottom	87

3.35	Square tube with holes 10 mm during experiment work (a) Holes in top (b) Holes in middle (c) Holes in bottom	88
3.36	Square tube with multi holes through experiment work (a) Specimen one (b) Specimen two	89
3.37	Cut specimen after test (a) Put adhesive tape on specimen (b) Put thread on adhesive tape	90
3.38	Circular and square tube (a) Fixed the specimen by C-clamp (b) Draw a grid on specimen	91
4.1	Experimental work of specimen two Sp2 (a) Load-displacement curve (b) Deformation history of formed folds	95
4.2	Irregular deformation (a) load-displacement curve (b) steps of deformation of the circular tube with holes 10 mm at middle	98
4.3	Regular deformation of square tube (a) Load-displacement curve (b) Snapshot of pictures of square tube under experimental test	101
4.4	Circular tube with multi holes (a) load-displacement curve (b) pictures of specimen under experimental work	105
4.5	Square tube with multi holes (a) load-displacement curve (b) pictures of specimen under experimental work	108
4.6	Compare the load-displacement curve of circular tube without and with holes (a) with 5 mm (b) with 10 mm (c) with multi holes	113
4.7	Comparison between the values of peak load of circular tube	113
4.8	Compare the load-displacement curve of square tube without and with holes (a) with 5 mm (b) with 10 mm (c) with multi holes	118
4.9	Comparison between the values of peak load of square tube	119
4.10	The values of crush force efficiency of square tube	119
4.11	The load-displacement curve of the circular and square tube with multi holes	122



## LIST OF ABBREVIATIONS

<b>Abbreviation</b>	<b>Specification</b>
ASTM	American society for testing and materials
C	Circular tube designation
Sq	Square tube designation
CFE	Crush force efficiency
SEA	Specific energy absorption
UTeM	University of Technical Malaysia Melaka
FKM	Faculty of Mechanical Engineering
Sp	Specimen
WH	Without hole
H	Hole
T	Top
M	Middle
B	Bottom
MH	Multi-hole
IEA	Impact energy absorption
Expt	Experimental

## LIST OF SYMBOLS

Symbol	Specification
$mm$	Millimetres
$m$	Mass
$N$	Newton
$P$	Crushing load
$t, h$	Tube thickness
$P_{max}$	Peak load
$P_{mean}$	Mean crushing load
$D$	Tube diameter
$E_a$	Energy absorption
$L$	Tube length
$KJ$	Kilojoule
$kN$	Kilo newton
$Kg$	Kilogram
$\delta$	Deformation length
$\sigma_y$	Yield stress
%	Percentage
$R$	Radius
$M_0$	Fully plastic bending moment per unit length
$A$	The contact area of the top cross-section
$\eta$	Structural effectiveness
$\Phi$	Hole diameter
$\sigma_u$	The ultimate tensile strength
$k$	Dimensionless constant
$E_e$	Energy efficiency

$H$	Half-length of the buckled fold
$\lambda$	Plastic folding
$\phi$	Relative density
$b_e$	Effective width
$\delta_t$	Total crushing distance
$A_0$	Overall section area
$C_1, C_2$	Constant to determine the number of holes
$V$	Crush structure volume
$b, c$	Width of square tube
$E_s$	Specific energy absorption
$\rho$	Density of structure

# CHAPTER 1

## INTRODUCTION

### 1.1 Safety and motivation

Every year more than million people die and 20 to 50 million more are exposed to injury by vehicle accident around the world (Hyder et al., 2013). This number of death will reach nearly 2 million in 2020 (Krug, 2012). The importance of the safety of passengers and vehicles as well as the high cost of maintenance of vehicles are the reasons that motivate engineers and automotive designers to design safe vehicle structure (especially cars) that absorb most of the energy during the collision, by converting the kinetic energy into another type of energy that cause less damage. In other words, the vehicle will absorb the bulk of the energy while the passengers will absorb a minimum energy to achieve maximum protection for passengers.

Therefore, to provide safety to passengers during accidents, one should find out which are the places that are prone to damage during a collision, where these places are controlled on the amount of energy absorbed to be dissipated within an area of collision and prevent the arrival of impact energy to the passengers or reduce this energy to get as little damage as possible. As shown in Figure 1.1 the bigger percentage of damage due to accident is in the frontal part of the car that reaches 48 %. This value explains the importance of the component of the car structure and how to make the structure plays a vital role to attenuate the propulsive force and prevention of this force of access to occupants.

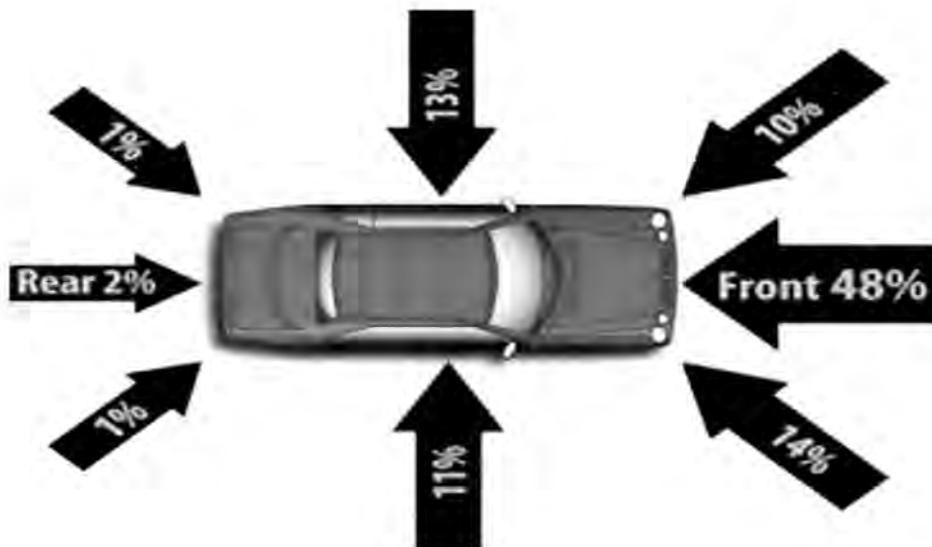


Figure 1.1: Percentage of damage direction due to accident (How to safety, 2014).

Thin-wall structures tubes have been extensively used as these energy absorbers that most commonly exist as either square or circular cross-sections (Jones 1989; Qi Chang et al., 2012; Zhou et al., 2011). These structures are called the frontal longitudinal, where such structures permanently deform to mitigate the crash energy and forces transmitted to the vehicle, reducing the deceleration experienced by the passengers as demonstrated in Figure 1.2.

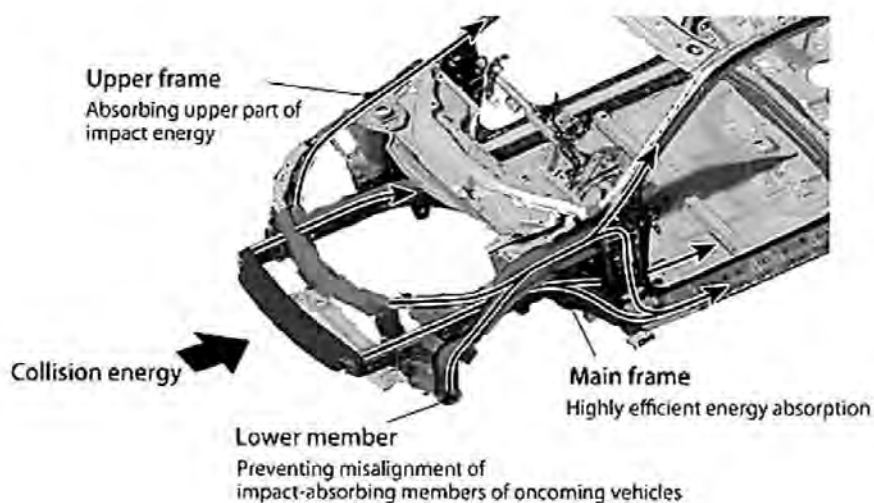


Figure 1.2: Transfer of collision energy in car structure (Crash box element in Honda CR-Z, 2010).

This structure should have the ability to form folds during accident, these folds can be obtained from a thin-walled tubular structure with imperfection (grooves, trigger, bend, and hole) because this imperfection helps to accelerate the fold forming at the same point of imperfection, which means that the imperfection is used to control the location of the forming fold during the collision. Thus, to decrease damage should put the imperfection in the frontal structure of the vehicle or in crush distance as in same Figure 1.3, this imperfection will work on accelerating the dissipate of kinetic energy that led to minimizing the number of death and injury by providing safe occupants' compartment. These imperfection can be found on any components of the vehicle, which may be the bumper, pillars, in the early design of the chassis and frontal side rail. They can be made in different shapes or from different tubular structure, (circular or square tube) and a specular tubular such as steel (stainless steel and cold mild steel) or aluminum can be selected. The thin-walled structure solves the problem of heavy weight and moreover when holes are put on the structure, it will increase the drop in the mass and make the structure absorb energy early as the fold forming is expedited.

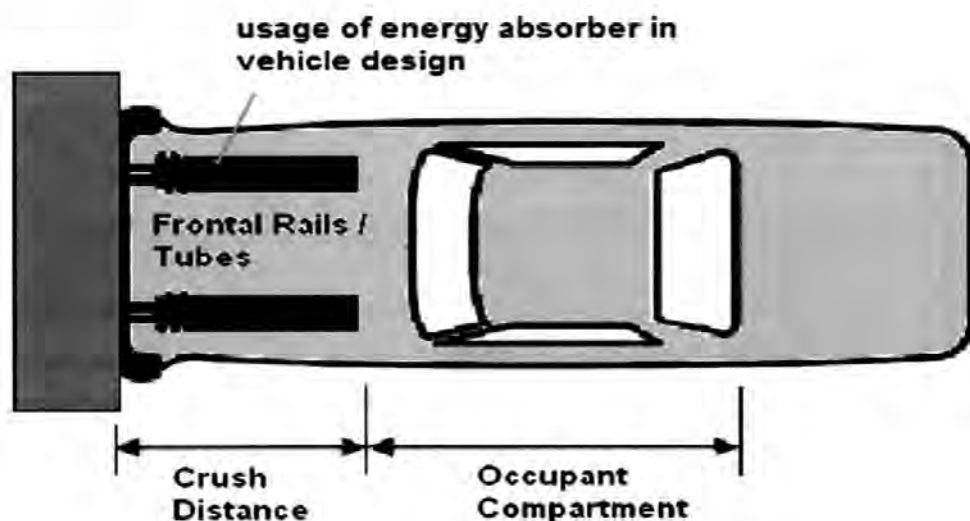


Figure 1.3: Frontal rails tubes put in crush distance (Qi Chang et al., 2012)

In addition to safety, there are many design aims which revolve around the same ring, as illustrated in Figure 1.4. These design aims are very important to meet the requirements of the consumer, and the acceptable design car should meet safety needs and all other design aims at the same time.

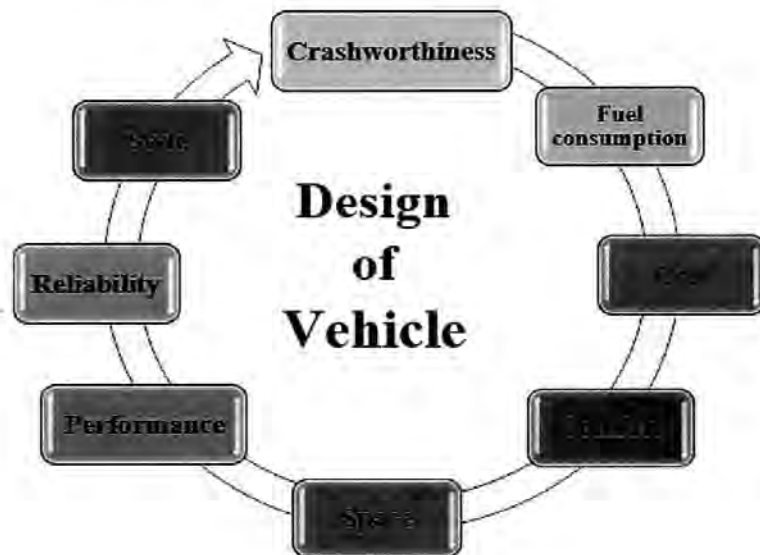


Figure 1.4: Design aims for good structure of vehicle

During the last decades, many works have been done to modify the existing energy absorption or to make new models; many studies have been done on the various forms of tubes such as circular, square and elliptical tubes to investigate the better absorption of energy (Marzbanrad et al., 2009). Many research conducted tested the impact on different types of materials such as aluminum, stainless steel and mild steel (Hsu and Jones, 2004). The pioneering work of the crushing of the thin-walled circular tube has performed and developed the theoretical formula of the mean load (Alexander, 1960). Meanwhile, some authors addressed the square tube containing holes to study the effect of the holes to reduce the peak load and increase energy absorption (Szwedowicz et al., 2014). Another studies have addressed the honeycomb shape and investigated it is effect on the absorption of

energy, where some authors have studied the empty honeycomb (Wu and jiang, 1997). Meanwhile, some studied the aluminum foam-filled honeycomb (Xu et al., 2012), whereas others examined the honeycomb with the cover on top and bottom ends (Griskevicius et al., 2010).

In addition to what has been mentioned, many attempts have been carried out by scientists to find out the effect of the tube's dimensions such as the thickness, length, and diameter of the tube and some variables such as speed, load and the direction of collapse on the amount of energy absorbed and the reduction of the peak load.

The aim of all these attempts is to get a better load-displacement characteristic to evaluate the energy absorption capacity of crash, as well as the crash force efficiency (CFE), a reduction in the peak load crash and the act of saving the lives of passengers and reducing the damage by providing the safety conditions.

## **1.2 Problem statement**

A lot of works have been developed in the past by engineers and researchers to investigate the thin-walled tube as a structure that has the ability to absorb the energy and decrease the value of the peak load (DiPaolo and Tom 2006; Abramowicz 2003; Guillow et al., 2001; Yob et al., 2016). The safety of occupants and the vehicle depend on the value of the absorbed energy and drop peak load value during the accident. Therefore, the structures should have the ability to absorbed higher energy and the higher decrease in peak load via adding some imperfections to achieve less damage and injuries. Studies related to thin-walled tubes with the existence of round holes are still lacking and more experimental attempts are needed. Thus, this study will investigate the effects of the