

# Wireless Camera Controller System for Mobile Robot using RF

M Shahrieel M Aras, M. Zaki A. bakar, M Hafiz Sulaiman, Fakulti Kejuruteraan Elektrik, UTeM

**Abstract**— This project is purposely to design the Wireless Camera Controller for Mobile Robot using Radio Frequency. To control position of the camera, forward and reverse motor circuit is most suitable to use. This circuit will be given the instruction to the dc motor either to turn forward or turn reverse. That instruction comes from Radio Frequency Transmitter and Radio Frequency Receiver. In the controller also use the RF transmitter circuit and RF receiver circuit. The RF transmitter circuit is to transmit the signal from switch. In this circuit should have the HT-12E IC as encoder to encode the signal from switch. The RF receiver circuit is to receive the signal from the RF transmitter circuit and this circuit used the HT-12D as decoder to decode back the original signal and in this circuit use the Charger Battery Circuit as backup supply when common supply black out. For sending the signal needed the right and sharp frequency to transmit the signal from RF transmitter circuit to RF receiver circuit.

**Keywords**- Wireless Camera Receiver, Wireless Camera Transmitter, RF Transmitter, RF Receiver.

## I-INTRODUCTION

The term of wireless is normally used to refer to any type of electrical or electronic operation which is accomplished without the use of a hard wired connection. The term of the wireless came into public use to refer to a

This work was supported in part by the FKE under final year project.

M. Shahrieel M. Aras is a lecturer in the Mechatronics Department, Faculty of Electrical Engineering (Email:shahrieel@utem.edu.my).

M. Zaki A.Bakar is a final year student in Faculty of Electrical Engineering (email: akie\_120185@yahoo.com).

M. Hafiz sulaiman is a final year project in Faculty of Electrical Engineering UTeM (email: hafiz@yahoo.com).

radio receiver or transceiver (a dual purpose receiver and transmitter device). Wireless communication is the transfer of information over a distance without the use of electrical conductors or wires. The distances involved may be short such as a few meters in television remote control or very long thousands or even millions of kilometers for radio communications. Now, the wireless is commonly used in the telecommunications industry to refer to telecommunications systems such as radio transmitters and receivers, remote controls, computer network and network terminal. Wireless camera has many advantages and its high technologies applications. Wireless camera using computerized is more efficient and flexible than television. We are able to control a wireless camera as a security whenever not at home and the wide angle of lenses is easier to focus an images. Nowadays wireless cameras are very popular because they allow the ultimate in flexibility of placement. Wireless cameras can be used quite creatively in certain applications because it's free from the limitations induced when hardwired models are used. The only real caveat of wireless cameras is that they often utilize a batter pack power supply source that needs recharged and reinstalled every few hours. For this reason alone, many folks stay away from this type of application. For overall process of the project, the wireless camera receiver and transmitter is use to transmit the signal from camera to monitor or display and the wireless camera will be control using the controller.

## II. DESIGN PROCESS

First, to design a wireless camera controller system, the project process should be identified. It can be classified into several stages. In designing process, step by step should be follow to reach the target. The first stage concentrates on the design concept of the controller circuit and wireless system. All the information about the controller circuit and wireless system will be collected. After that, the circuit should be design and simulate using the Proteus software to make sure all the designing circuit in very well operation. Another section the circuit must be fabricated when all the circuit already testing. The final stage is concluded with its testing, appraisal and minor adjustment of the project. The overall design flows of the design and development of

wireless camera controller system is shown in Figure 1 and Figure 2 shown the flow chart for the controller of project.

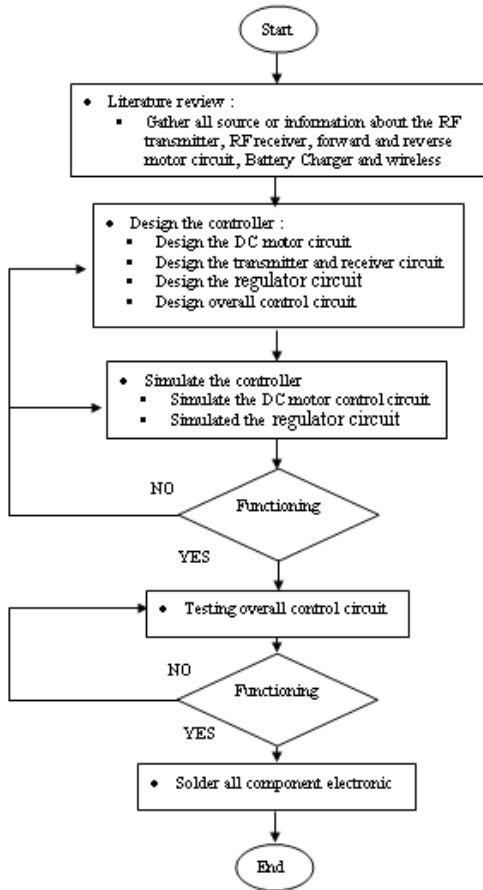


Figure1: Design and construction of project

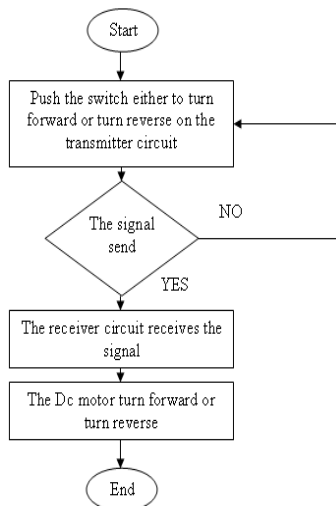


Figure 2: Flow Chart for the Controller of Project

Figure 3 shows the blocks of operation for control the position of wireless camera. The frequency will be use in this project is 315 MHz for transmit and receive. The

rotation of wireless camera will be control by the motor driver circuit.

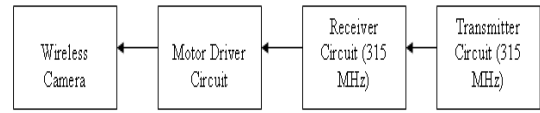


Figure 3: Block Diagram Operation for Control the Position of Wireless Camera

### III. THEORY

Wireless systems consist of combined RF components such as transmitters, receivers, transceivers, filters, down / up converters, antennas, and antenna positioners [1]. Wireless systems use low-powered radio waves to communicate data between these devices without the use of cables. Wireless systems are widely used in computer networking and communication applications. These devices communicate with each other and transmit data using wireless access protocols. Wireless communication may be via Radio Frequency Communication, Microwave Communication for image long range line of sight via highly directional antenna or short range communication and Infrared (IR) short range communication for image from remote controls.

The basic of communication system is to communicate data or information from one point called source of generation to distant point called destination of end user. The communication channel or media connects source as well as destination over telephone lines, microwave links and optical fiber cable. The basic of communication block diagram as shown in Figure 4.

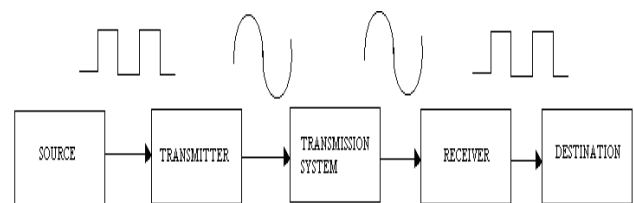


Figure 4: Block Diagram of Basic Communication

In this project, can be classified into several stages consists of three main parts such as Wireless Controller, Image Acquisition Setup and Processor. Wireless camera controller design using the radio frequency to control the position of wireless camera with distance 100 meters without obstacle. In image acquisition setup, it consists of an analogue camera (wireless camera) with suitable interface for connecting it to processor and processor consists of either pc or laptop. The entire of the system to show the image can be represented as shown in Figure 5.

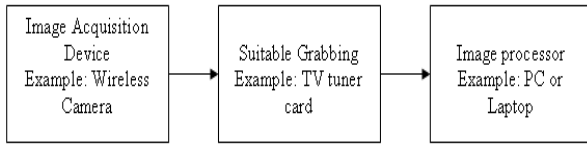


Figure 5: Block Diagram for Display Image

Image capturing can be done using wireless camera available in various resolutions. There are two types of cameras generally available which is digital cameras (CCD charge coupled device and CMOS sensor based) and analogue cameras. Digital cameras generally have a direct interface with computer (USB port) but analogue cameras require suitable grabbing card or TV tuner card for interfacing with computer. Power requirement of Wireless cameras give high quality and low noise images. It generates an analog signal and uses analog to digital converter (ADC) and thus consumes high power.

#### IV RESULTS

The main part of this project is wireless controller which is Transmitter, Receiver, DC Motor Circuit and Regulator Circuit. The transmitter is to transmit the signal from input to the receiver. The switch is use as an input to control the DC motor to turn right or turn left. In this part, have a several main component to make sure the circuit or operation fully functioning very well such as:

##### A- Encoder IC

The kind of Encoder integrated circuit use in circuit is HT-12E. The Encoder is series of CMOS LSIs for remote control system applications. They are capable of encoding information which consists of N address bits and 12-N data bits. The programmed addresses or data are transmitted together with the header bits via an RF or an infrared transmission medium upon receipt of a trigger signal. The capability to select a TE trigger on the HT-12E enhances the application flexibility of the 2<sup>12</sup>series of encoders.

##### B- RF Transmitter Module (TX Modulation)

RF Transmitter Modules (TX Modulation) are very small in dimension and have a wide operating voltage range from 3V to 12V. This RF transmitter can be used to transmit signal up to 100 meters. The antenna design, working environment and supply voltage will seriously impact the effective distance.

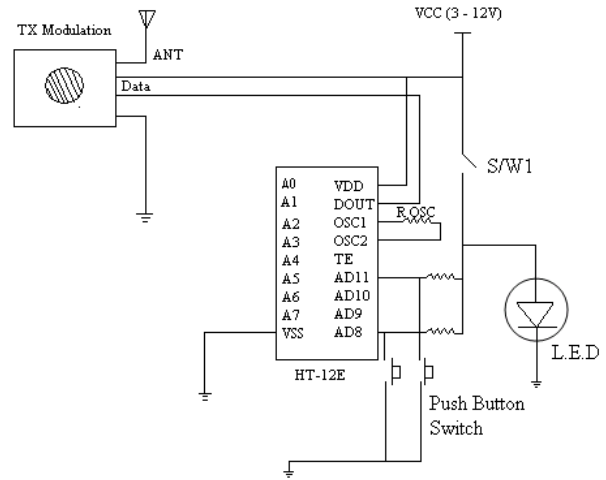


Figure 6: RF Transmitter Circuit

Figure 6 shows the RF Transmitter Circuit. When the S/W 1 is closed and push button switch is push, The Encoder IC will encode the data from switch to the signal transmitter. Then the RF transmitter Module will take that data and transmit the signal to the RF receiver Module with the limited distance and to follow the accurate frequency. In the receiver also have two main parts to make this circuit operating very well such as:

##### A- Decoder IC

The kind of Decoder integrated circuit use in this circuit is HT-12D. The decoders IC are series of CMOS LSIs for remote control system applications. For proper operation, a pair of encoder and decoder with the same number of addresses and data format should be chosen. The decoders receive serial addresses and data from a programmed of encoders that are transmitted by a carrier using an RF or a transmission medium.

##### B- RF Receiver Module (RX Modulation)

These RF receiver modules (RX Modulation) are very small in dimension. The low cost RF Receiver can be used to receive RF signal from transmitter at the specific frequency.

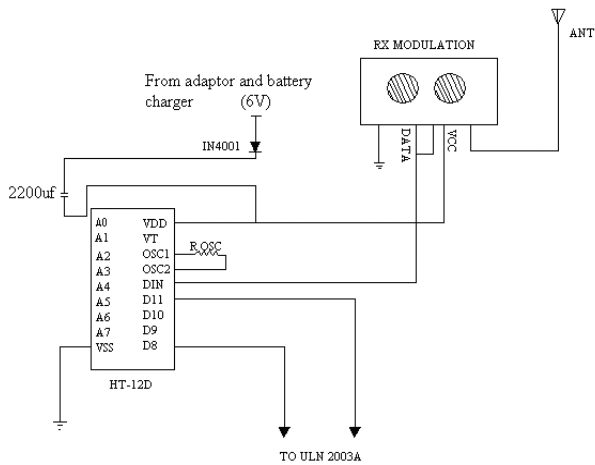


Figure 7: RF Receiver Circuit

Figure 7 shows the RF Receiver Circuit. When the RX module receives the signal from transmitter, the decoders receive the data and pin DIN activates the oscillator which in turn decodes the incoming address and data. If the received address codes all match, the decoder activate the output pins. The source of this circuit use adaptor which connects to the regulator circuit as common supply and battery charger as backup supply. The reason act of adaptor connect to the regulator circuit because the RX Modulation need VCC 6V, so the kind of this regulator is 7806 where produce the output fix 6V. Figure 8 shows the regulator circuit.

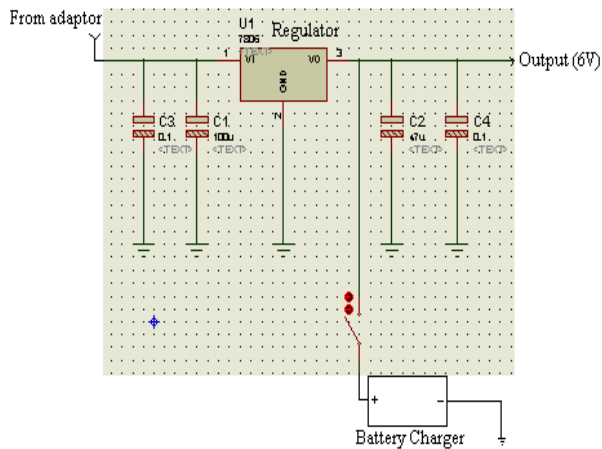


Figure 8: Regulator Circuit

Another important circuit used in this project is the Driver Motor Control Circuit to control the rotation of wireless camera. In Driver Motor Control Circuit have a several main component such as:

### A-IC ULN 3002A

The ULN 2003A is a versatile devices useful for driving a wide range of loads including solenoid, relay Dc motor, LED display and other. The ULN 2003A are high voltage and high current Darlington array. Each consist seven NPN Darlington pairs that features high voltage output with common cathode clamp diode for switching inductive loads. It can accept output voltage of up 50V

### B-Relay

The relay used in this circuit is 6V coil as a switching to control the dc motor either to turn forward or turn reverse. When a current through the coil, the resulting magnetic field attract an armature that is mechanically linked to a moving coil. When the current to the coil is switched off, the armature is returned by a forced approximately half a strong as the magnetic force it relaxed position. If the coil is energized with Dc motor, a diode is frequently installed across the coil

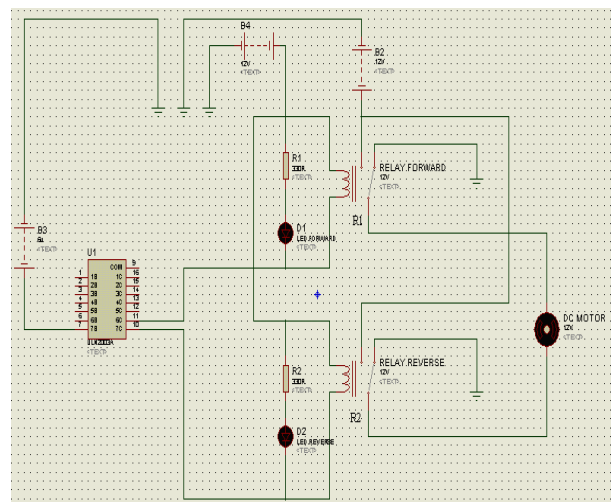


Figure 9: Driver Motor Circuit using ULN 2003A

Figure 8 shows the simulation of dc motor control circuit using ULN 2003 in Proteus Design. The relay in this circuit as a switching and ULN 2003A as a driver motor either to turn forward or turn reverse. When the coil relay 1 is energized, contact relay in normally open become normally closed. In this condition the dc motor will be turn forward, as shown in Figure 10. The operation of relay 2 same such as relay 1, depend on input of ULN 2003A as shown in Figure 11.

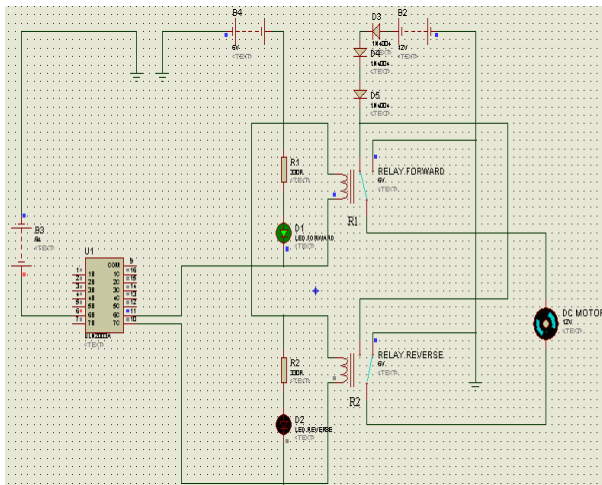


Figure 10: 9 DC Motor Turn Forward

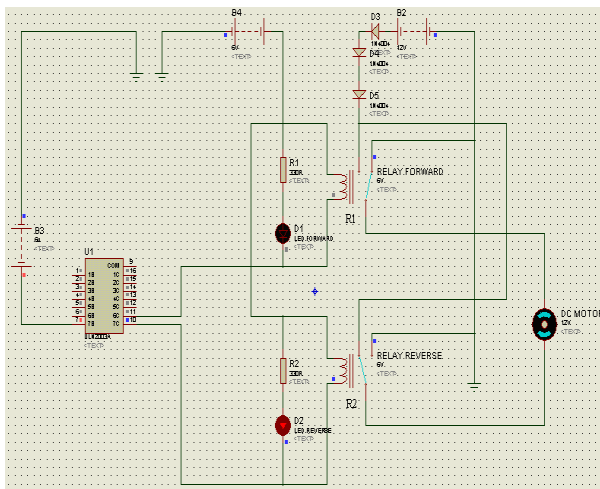


Figure 11: DC Motor Turn Reverse

When the switch on transmitter is push either forward or reverse, the encoder IC HT-12E will encode the signal and send that signal by the TX Modulation to the RX Modulation with carries transmission system. The RX Modulation will send the signal to decoder IC HT-12D to decode back into the original signal either the dc motor should be turn forward or turn reverse. The image will be capture and send to the Radio AV Receiver by the wireless camera and that image will display by the monitor. Figure 12 shows the overall operation of the Wireless Camera Controller using radio frequency.

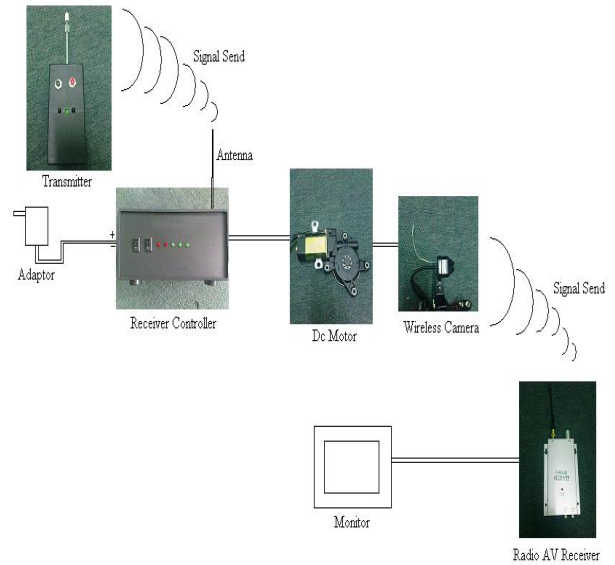


Figure 12: Overall Operation of the Wireless Camera Controller Using Radio Frequency

## V CONCLUSION

This paper describes the development of the Wireless Camera Controller for Mobile Robot using Radio Frequency. The devices make process easy where the wireless camera can control by the transmitter controller which is the wireless camera able to rotate 360 degrees to observe the environment. The communication of the transmitter controller to the receiver controller will be in real time.

## ACKNOWLEDGEMENTS

We wish to express our gratitude to honorable University (**Universiti Teknikal Malaysia Melaka**) especially to Faculty of Electrical Engineering for give the financial as well as moral support for complete this project successfully.

## REFERENCES

- [1] Walter A. Elmore. *Protective Relaying Theory and Application*. Marcel Dekker, Inc
- [2] Vladimir Gurevich (2008). *Electronic Devices on Discrete Components for Industrial and Power Engineering*. London-New York: CRC Press, 418
- [3] Anderson (1998). *Wireless Cameras Operating Manual*. Tommy Gamis.
- [4] John Wiley & Sons (2003). *Control System Engineering*. 4<sup>th</sup> Edition. S. Nise Norman.
- [5] [http://www.alibaba.com/product-gs/51531904/Power\\_Window\\_Motor\\_Window\\_Motor\\_Universal\\_Type\\_.html](http://www.alibaba.com/product-gs/51531904/Power_Window_Motor_Window_Motor_Universal_Type_.html)
- [6] D. Appleton and Co. (1997). *Story Of Wireless Telegraphy*. 2<sup>nd</sup> Edition. New York Story, Alfred Thomas

- [7] The SINTEF Group, The Foundation for Scientific and Industrial Research at the Norwegian Institute of Technology
- [8] Pearson Prentice Hall (2005). *Introduction To Robotics, Mechanics and Control*. 3<sup>rd</sup> Edition. John J. Craig
- [9] Aurbach Publications (2004). *Wireless Sensor Networks*. 3<sup>rd</sup> Edition Edgar H. Callaway, Jr.