

IN-VITRO APATITE GROWTH ON POROUS β -TRICALCIUM PHOSHPATE SCAFFOLDS COATED WITH PHVB

Z. Mustafa¹, N. F. Ishak¹, R. Othman¹, N. Ahmad², A.R. Toibah¹,
S.H. Sheikh Md Fadzullah³ and K.E. Tanner⁴

¹Advanced Manufacturing Centre, Fakulti Kejuruteraan Pembuatan,
Universiti Teknikal Malaysia Melaka, Hang Tuah Jaya, 76100
Durian Tunggal, Melaka, Malaysia.

²School of Materials Engineering, Universiti Sains Malaysia, Engineering Campus,
Nibong Tebal, 13400, Penang, Malaysia.

³Fakulti Kejuruteraan Mekanikal, Universiti Teknikal Malaysia Melaka, Hang Tuah
Jaya, 76100 Durian Tunggal, Melaka, Malaysia.

⁴Biomedical Engineering Division, School of Engineering, University of Glasgow,
Glasgow, G12 8QQ, UK.

Corresponding Author's Email: zaleha@utem.edu.my

Article History: Received 16 January 2018; Revised 17 June 2018; Accepted
14 October 2018

ABSTRACT: The bioactive properties of polyhydroxybutyrate-co-valerate (PHBV) coated beta-tricalcium phosphate (β -TCP) have been studied in-vitro. Porous β -TCP scaffolds have been prepared using a template method and sintered at 1450 °C. The bio ceramics were then coated with PHBV solution before being immersed for 6 weeks in a simulated body fluid (SBF) at 37°C. At the end of the immersion time, insignificant changes in the SBF pH value was observed, suggesting good stability against hydrolytic degradation. X-ray Diffraction (XRD) and Fourier Transform Infrared Spectroscopy (FTIR) analyses revealed the presence of apatite. Morphological analysis by SEM showed the formation of apatite crystals in the form of flakes and globular deposits on the scaffold surface. This bone-like apatite indicates good biological activity of the bio ceramics scaffold with PHVB coating suggesting that the composite has potential for bone tissue engineering applications.

KEYWORDS: *Beta-Tricalcium Phosphate; Polyhydroxybutyrate-Co-Valerate; Apatite; Simulated Body Fluid; Composite Scaffold*

1.0 INTRODUCTION

Bone tissue has a complex structure consisting of approximately 70% nano substituted hydroxyapatite ($\text{HA-Ca}_{10}(\text{PO}_4)_6(\text{OH})_2$) and 30% collagen, mainly Type I, by weight, that contribute to its relatively high strength. The major functions of bones are to provide structural support, that is load bearing, protect of the internal organs, maintain the metabolic process, provide a calcium reserve and others [1-2]. Although bone has the ability to self-heal, this is only possible for small defects, while larger bone defects, above a critical size, need surgical treatment including the use of a scaffold. The application of bone tissue engineering, incorporating suitable biocompatible and bioactive scaffolds, is preferred in reconstruction of critical size bone defects.

Porous calcium phosphates such as HA have been extensively studied for the scaffold materials reconstruction of bone defects [3], but show limited bioresorbability properties to facilitate new bone formation. In contrast, tricalcium phosphate (TCP) is a biodegradable bio ceramic, which provide more desirable degradation characteristic and are better candidate bone replacement materials [4-5].

Bone scaffolds must provide sufficient mechanical strength and toughness, as well as ability to facilitate a good biological response to ensure successful application. Thus, extensive studies have tried to produce degradable scaffolds using ceramic-polymer composite scaffold systems to produce the required combination of high strength and toughness yet bioactive scaffolds by combination of the various polymers with the bio ceramic [6-9]. However, limited success has been reported as the polymeric scaffold can become fragile with increasing amounts of bioactive filler, thus limiting their content to 20 or 40 vol. % [10]. This in turn limits the osteointegration of the biocomposite. Alternatively, a high concentration of ceramic scaffold can be produced by combining two separate methods which are the fabrication of porous bio ceramics scaffold followed by a polymeric coating to improve the mechanical properties and bioactivity [5, 7-8, 11].

Biodegradable polymers, such as poly (l-lactic acid) (PLLA), and poly (glycolic acid) (PGA) are commonly used in bone tissue engineering. They are biocompatible and can support cell proliferation during cell culture and in vivo applications. However, it has been reported that they can generate acidic by-products during the degradation process that may cause a strong inflammatory response from the host tissue

[12-13]. Poly (3-hydroxybutyrate-co-3-hydroxyvalerate) (PHBV) is a range of copolymers of polyhydroxybutyrate (PHB) and polyhydroxyvalerate (PHV) and are degradable candidates for tissue engineering as well as in drug delivery applications [9, 12, 14-15]. These applications are largely due to their excellent biocompatibility as well as the ability for their degradation properties to be tailored to suit the intended application [16-17]. Doyle et al. [9] showed a slow loss of mechanical properties of PHB reinforced with HA during the in-vitro study as well as good in-vivo biocompatibility and bioactivity. Kose et al. [18] reported the stability of the PHBV porous scaffold up to 120 days when immersed saline solution. Afterwards, the degradation activity was observed through a reduction in pH levels. Reasonable cell culture activity was also observed during in vitro testing. The other advantage of PHBV is it does not produce acidic by-products during the degradation process unlike other degradable polymers such as PLA, PGA, or their co-polymers [12, 18].

While PHBV possess good biocompatibility and is a non-toxic substrate for cell culture [19], its bioactive properties are still insufficient, and this limits its application as a bone replacement material. Thus, incorporation of bioactive inorganic phase is often used. Duan et al. [20] successfully fabricated porous PHBV scaffolds by incorporating Ca-P using selective laser sintering which reported a promising initial compressive strength and dimensional accuracy. Wang et al. [21] attempted to integrate β -Ca₂SiO₄ nanoparticles into PHBV via solvent casting and particulate incorporation. They reported that, while the process was able to produce high porosity scaffolds which are important for cell seeding, the bioactive phase is only in the range of 2.5-5%, which may limit the bioactivity. However, these studies focussed on the incorporation of the bioactive phase calcium phosphate such as HA and TCP in the PHVB polymeric scaffold system to improve their bioactive properties. Various studies show that bone-like apatite will precipitate on bioactive materials, such as calcium phosphate and bio-glasses [22-23]. In contrast, although a polymeric coating is favourable in order to improve the compressive strength of the TCP scaffold as used in this study, the hydrophobic characteristic may hinder the bio ceramics exposure and subsequently reduce the bioactivity. Therefore, the aim of this study is to evaluate the preliminary biological properties of the PHVB coated β -TCP scaffold in-vitro.

This paper presents the preparation of a β -TCP scaffold using a replication method and the used of high temperature sintering to transform it from the original α -TCP form. The porous scaffold is then

coated with PHVB before being subjected to immersion in stimulated body fluid (SBF) for up to 6 weeks to evaluate their biological properties.

2.0 METHODOLOGY

2.1 Scaffold fabrication

Porous β -TCP/PHBV composite scaffolds were prepared via our previously described polymer replication method [24]. Calcium phosphate ($\text{Ca}_3(\text{PO}_4)_2$) powder (Sigma Aldrich, United Kingdom) was dispersed in 2 wt.% polyvinyl alcohols aqueous solution at a powder to liquid ratio of 5/5 (wt./vol.), this approach produces a well-dispersed slurry. Polyurethane foam templates (Wansern Technology Sdn. Bhd., Malaysia) with dimension of 1 cm \times 1 cm \times 1 cm were immersed into the slurry and gently squeezed several times. This allows the slurry to penetrate the foams before the excess slurry was squeezed out. In order to avoid the blockage of pores, compressed air was used to blow out any residual solution. The ceramic-slurry coated PU foams were then left to dry in an oven (Mermert, Germany) at 60°C for 24 hours.

Following the drying, the ceramic-slurry coated PU foams were sintered in an electric furnace (Carbolite Furnace Manifesto, UK) using a four-stage firing schedule. First, the coated foams were heated from room temperature to 400°C at a heating rate of 1°C min⁻¹ to burn-out the polyurethane foam and to prevent thermal shock. The foam was then heated to 1450°C at a faster rate of 5°C min⁻¹ to allow a sintering reaction of the calcium phosphate slurry followed by being held at the maximum temperature for 4 hours to complete sintering process before it was cooled down to room temperature at a rate of 5°C min⁻¹. Subsequently, 5g of PHVB (Sigma Aldrich, United Kingdom) were dissolved in 50 ml chloroform and refluxed at 60°C for 30 minutes. The ceramic scaffold was then immersed into the solution and dried at room temperature in a fume cupboard overnight. The obtained polymeric coated scaffolds were further dried in a vacuum oven (Mermert, Germany) for 24 hours at 37°C.

2.2 Scaffold Characterization

The scaffolds were immersed in stimulated body fluid (SBF) (pH 7.4-7.6) at 37°C for a duration of up to 42 days (6 weeks) using an IN30 incubator (Mermert, Germany). Five samples were used at each immersion period. Prior to the immersion test, the SBF solution was

prepared as detailed in [25]. The SBF was replaced weekly and the pH values were measured using a pH meter model HI 2211-01 (Hanna Instruments, USA). The samples were taken out at interval of 7, 14, 21, 28, 35 and 42 days. The change of mass (wt. %) was calculated by using Equation (1).

$$\text{Mass (wt.\%)} = \frac{W_o - W_t}{W_o} \times 100\% \quad (1)$$

where W_o is the initial weight and W_t is the final weight. The phase and crystallographic structures of the synthesized samples were identified by X-Ray Diffraction (X'Pert Pro MPD PW 3060/60; PanAnalytical, Netherland) operating at room temperature using Cu $K\alpha$ radiation ($\alpha=1.54178 \text{ \AA}$), over the range of $10^\circ - 90^\circ$. Following this the variations of the structural characteristic groups and bonds obtained from these bioceramic scaffolds were captured using a FT/IR 6100 (JASCO, Germany) Fourier Transform Infrared Spectroscopy (FTIR) system. The surface morphologies of samples after experiments were examined using an EVO 50 SEM (Carl Zeiss SMT, UK). All samples were gold coating prior to the examination.

3.0 RESULTS AND DISCUSSION

The series of changes, such as the material dissolution and deposit formation on the surfaces of the samples, occurred when composite materials were soaked in SBF for 6 weeks. The pH during the in-vitro degradation is shown in Figure 1. The value remained virtually unchanged up to 6 weeks from its initial value (pH 7) indicating the stability of the scaffold against the hydrolytic degradation as reported in the literature [18]. The weight of the scaffold remains relatively constant up to 4 weeks, before a small weight gain (4.2%) was observed in final immersion of week 6 (42 days) (Figure 2). This suggests apatite mineral has started to precipitate on to the scaffold surface.

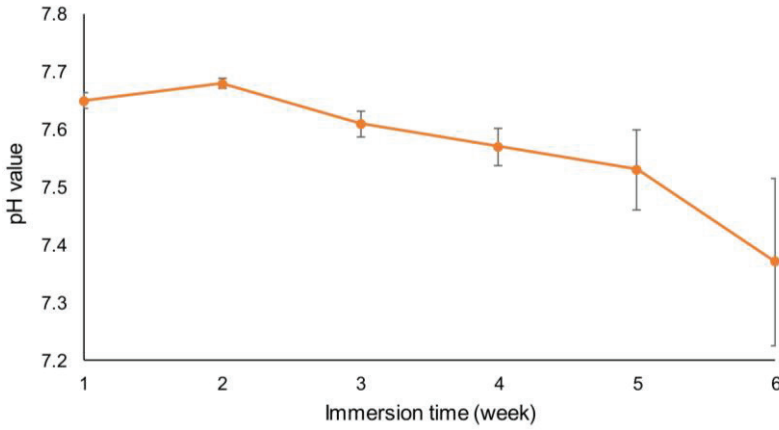


Figure 1: pH value change for SBF during the immersion process

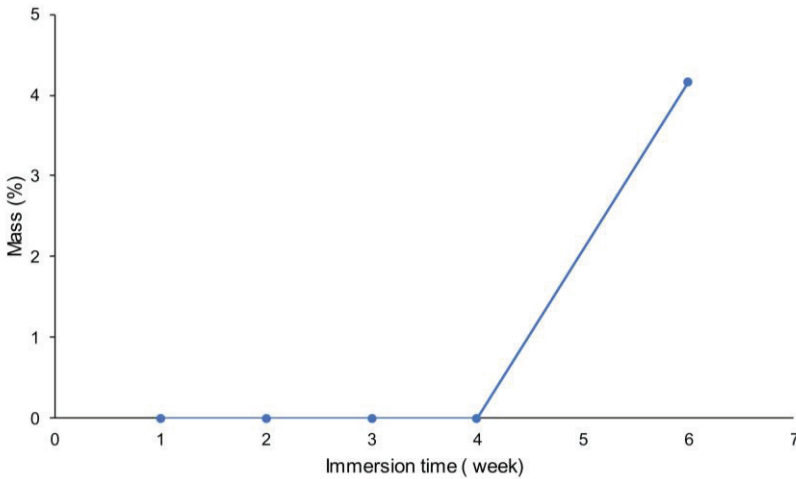


Figure 2: Change of mass during the immersion process

The β -TCP/PHBV scaffolds incubated in SBF at week 6 were also characterized by X-ray diffraction and their characteristics were compared prior to immersion (Figure 3). Broad and diffuse peaks at $2\theta = 25.9^\circ$ and $31.8\text{--}32.9^\circ$ clearly appear in the resulting XRD patterns, which may be ascribed to the characteristic peaks of apatite [26-27].

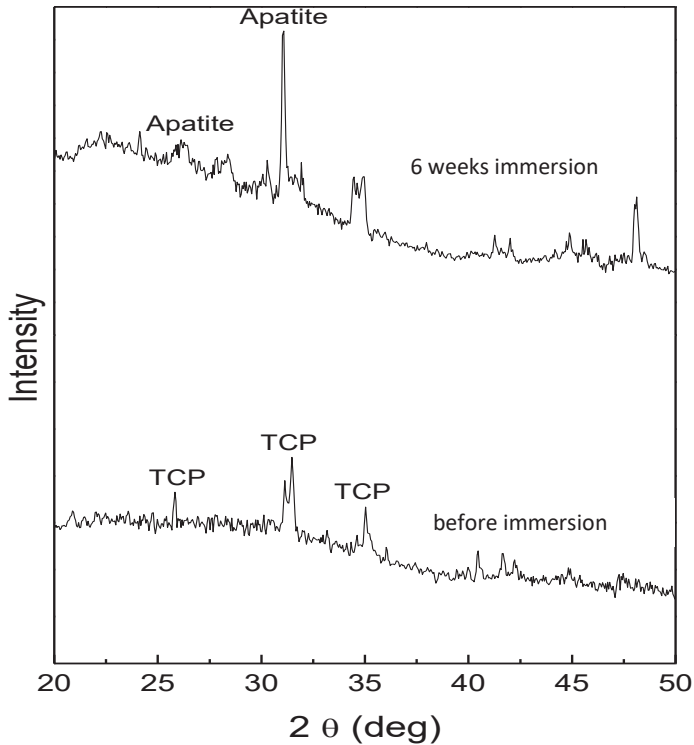


Figure 3: XRD patterns of β -TCP/PHBV before and after 6 weeks immersion in SBF showing apatite deposition

FT-IR spectra of the scaffold prior to SBF immersion and after 6 weeks in-vitro immersion are shown in Figure 4. The appearance of new peaks after 6 weeks immersion was presented at $550\text{--}650\text{ cm}^{-1}$ and $950\text{--}1100\text{ cm}^{-1}$, which were attributed to PO_4^{3-} vibration. Furthermore, the formation of bands at $1400\text{--}1500\text{ cm}^{-1}$ is due the carbonate vibrations and is characteristic of carbonated apatite [23, 28]. The hydroxyl group vibration mode was also observed at $2500\text{--}3700\text{ cm}^{-1}$.

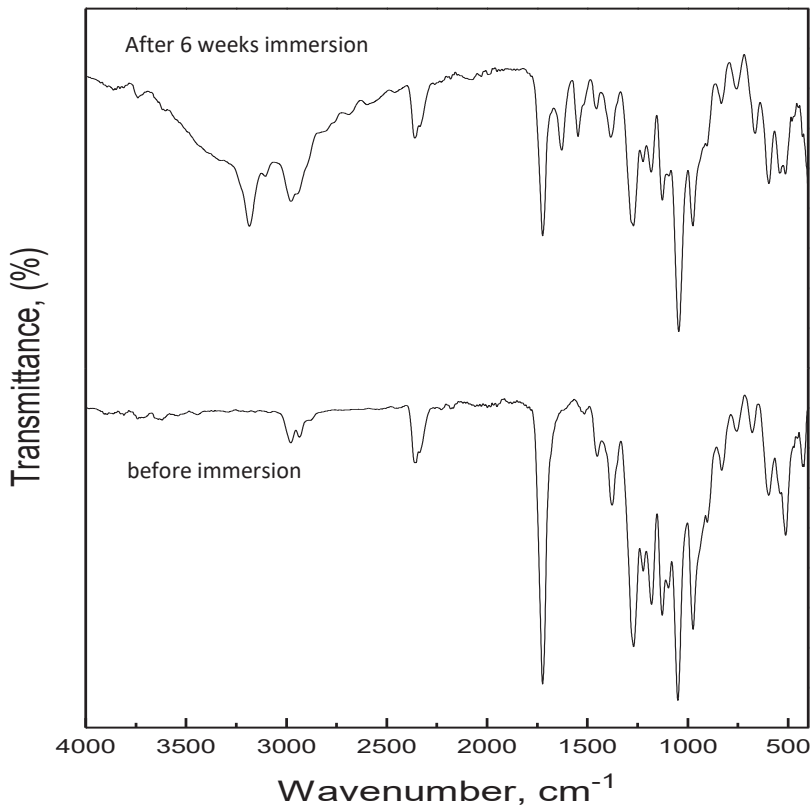


Figure 4: FTIR analysis of surfaces of β -TCP/PHBV before and after 6 weeks immersion in SBF solutions showing apatite deposition

SEM micrographs of the scaffold before and after 6 weeks immersion in SBF are shown in Figure 5. The scaffold contains interconnected pores of different shapes in the size range 200-400 μm after the PHBV coating (Figure 5a). The architecture and structure are not significantly different from the uncoated β -TCP scaffold reported by our earlier study [29]. This is desirable to achieve osteogenic cell ingrowth. Prior to the immersion, the β -TCP/PHBV scaffold revealed a smooth surface for the β -TCP ceramic strut coated with a thin layer of PHBV (Figure 5b). The incubation in the SBF subsequently led to the nucleation and growth of the apatite layer. Figure 5c shows the mineral starting to precipitate on the smooth surface of the scaffold, assembling as small flake-like pieces. At higher magnification, a few mineral crystals with globular structure are also observed (Figure 5d). Previous studies have reported the apatite mineral in form of flakes [30-33]. The precipitated apatite mineral in this study is in the form of flaky and globular structures similar to that shown in previous study [22]. Apatite crystal morphology may be influenced by the underlying

characteristic of the substrate used that differs in topography and charge [33].

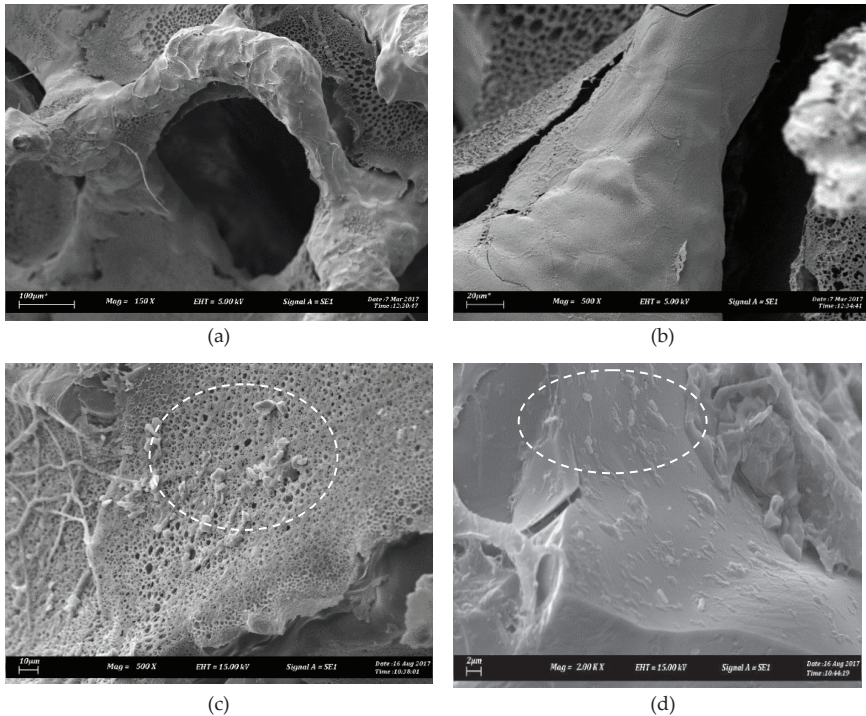


Figure 5: SEM micrograph of scaffolds after immersion in SBF (a)-(b) 0 week (c)-(d) 6 weeks and marker bars (a) 100µm, (b) 20µm, (c) 10µm and (d) 2µm

4.0 CONCLUSION

In conclusion, the scaffold possesses an open architecture with interconnected pores after the application of PHVB coating, as well as hydrolytic degradation stability. After being immersed for 6 weeks in SBF at 37°C, a bone-like apatite was formed on the β -TCP/PHBV surface, which was both confirmed by FTIR and XRD analyses, thus indicating a good bioactivity of the composite. Hence, the composite showed a promising application prospect as an artificial bone replacement material.

ACKNOWLEDGEMENTS

The authors are grateful to the Ministry of Education Malaysia for funding this research project under Research Acculturation Grant Scheme RAGS/1/2014/TK04/FKP/B00073 and Universiti Teknikal Malaysia Melaka (UTeM) for the use of laboratory facilities.

REFERENCES

- [1] J. Venkatesan, I. Bhatnagar, P. Manivasagan, K.H. Kang and S.K. Kim, "Alginate composites for bone tissue engineering: A review", *International Journal of Biological Macromolecules*, vol. 72, pp. 269-281, 2015.
- [2] J.A. Sowjanya, J. Singh, T. Mohita, S. Sarvanan, A. Moorthi, N. Srinivasan and N. Selvamurugan, "Biocomposite scaffolds containing chitosan/alginate/nano-silica for bone tissue engineering", *Colloids and Surfaces B: Biointerfaces*, vol. 109, pp. 294-300, 2013.
- [3] A.J. Wagoner-Johnson and B.A. Herschler, "A review of the mechanical behavior of CaP and CaP/polymer composites for applications in bone replacement and repair", *Acta Biomaterialia*, vol. 7, no. 1, pp. 16-30, 2011.
- [4] L.T. Bang, B.D. Long and R. Othman, "Carbonate hydroxyapatite and silicon-substituted carbonate hydroxyapatite: synthesis, mechanical properties, and solubility evaluations", *Scientific World Journal*, vol. 2014, pp. 1-9, 2014.
- [5] L.T. Bang, S. Ramesh, J. Purbolaksono, B.D. Long, H. Chandran and R. Othman, "Development of a bone substitute material based on alpha-tricalcium phosphate scaffold coated with carbonate apatite/poly-epsilon-caprolactone", *Biomedical Materials*, vol. 10, no. 4, pp. 045011-045022, 2015.
- [6] Z. Mustafa and K.E. Tanner, "Composites for hard tissue repair," in *Wiley Encyclopedia of Composites*, L. Nicolais and A. Borzacchiello, Eds. New Jersey: John Wiley and Sons, 2012, pp. 418-431.
- [7] Y. Kang, A. Scully, D. A. Young, S. Kim, H. Tsao, M. Sen and Y. Yang, "Enhanced mechanical performance and biological evaluation of a PLGA coated β -TCP composite scaffold for load-bearing applications", *European Polymer Journal*, vol. 47, no. 8, pp. 1569-1577, 2011.
- [8] L.T. Bang, K. Giichiro, N. Masaharu, M. Munar, K. Ishikawa and R. Othman, "The use of poly (ϵ -caprolactone) to enhance the mechanical strength of porous Si-substituted carbonate apatite", *Journal of Applied Polymer Science*, vol. 130, no. 1, pp. 426-433, 2013.
- [9] C. Doyle, E.T. Tanner and W. Bonfield, "In vitro and in vivo evaluation of polyhydroxybutyrate and of polyhydroxybutyrate reinforced with hydroxyapatite", *Biomaterials*, vol. 12, no. 9, pp. 841-847, 1991.
- [10] K.H. Tan, C.K. Chua, K.F. Leong, C.M. Cheah, P. Cheang, M.S. Abu Bakar and S.W. Cha, "Scaffold development using selective laser sintering of polyetheretherketone-hydroxyapatite biocomposite blends", *Biomaterials*, vol. 24, no. 18, pp. 3115-3123, 2003.

- [11] S.I. Roohani-Esfahani, S. Nouri-Khorasani, Z. Lu, R. Appleyard and H. Zreiqat, "The influence hydroxyapatite nanoparticle shape and size on the properties of biphasic calcium phosphate scaffolds coated with hydroxyapatite-PCL composites", *Biomaterials*, vol. 31, no. 21, pp. 5498-5509, 2010.
- [12] E.C. Scheithauer, W. Li, Y. Ding, L. Harhaus, J.A. Roether and A.R. Boccaccini, "Preparation and characterization of electrosprayed daidzein-loaded PHBV microspheres", *Materials Letters*, vol. 158, pp. 66-69, 2015.
- [13] K. Rezwan, Q.Z. Chen, J.J. Blaker and A.R. Boccaccini, "Biodegradable and bioactive porous polymer/inorganic composite scaffolds for bone tissue engineering", *Biomaterials*, vol. 27, no. 18, pp. 3413-3431, 2006.
- [14] R.A. Bakare, C. Bhan and D. Raghavan, "Synthesis and characterization of collagen grafted poly(hydroxybutyrate-valerate) (PHBV) scaffold for loading of bovine serum albumin capped silver (Ag/BSA) nanoparticles in the potential use of tissue engineering application", *Biomacromolecules*, vol. 15, no. 1, pp. 423-435, 2014.
- [15] N. Sultana and M. Wang, "PHBV/PLLA-based composite scaffolds fabricated using an emulsion freezing/freeze-drying technique for bone tissue engineering: surface modification and in vitro biological evaluation", *Biofabrication*, vol. 4, no. 1, pp. 1-14, 2012.
- [16] D.B. Hazer, E. Kılıçay and B. Hazer, "Poly(3-hydroxyalkanoate)s: Diversification and biomedical applications", *Materials Science and Engineering: C*, vol. 32, no. 4, pp. 637-647, 2012.
- [17] W. Li, P. Noeaid, J.A. Roether, D.W. Schubert and A.R. Boccaccini, "Preparation and characterization of Vancomycin releasing PHBV coated 45S5 bioglass-based glass-ceramic scaffolds for bone tissue engineering", *Journal of the European Ceramic Society*, vol. 34, no. 2, pp. 505-514, 2014.
- [18] G.T. Köse, H. Kenar, N. Hasırcı and V. Hasırcı, "Macroporous poly (3-hydroxybutyrate-3 hydroxyvalerate) matrices for bone tissue engineering", *Biomaterials*, vol. 24, no. 11, pp. 1949-1958, 2003.
- [19] Y. Ma, Y. Zheng, G. Wei, W. Song, T. Hu, H. Yang and R. Xue, "Processing, structure, and properties of multiwalled carbon nanotube/poly (hydroxybutyrate-co-valerate) biopolymer nanocomposites", *Journal of Applied Polymer Science*, vol. 125, no. S1, pp. 620-629, 2012.
- [20] B. Duan, W.L. Cheung and M. Wang, "Optimized fabrication of Ca-P/PHBV nanocomposite scaffolds via selective laser sintering for bone tissue engineering", *Biofabrication*, vol. 3, no. 1, pp. 015001-015013, 2011.
- [21] N. Wang, Z. Zhou, L. Xia, Y. Dai and H. Liu, "Fabrication and characterization of bioactive β -CaSiO₃/PHBV composite scaffolds", *Materials Science and Engineering: C*, vol. 33, no. 4, pp. 2294-2301, 2013.

- [22] S.S. Kim, M.S. Park, S.J. Gwak, C.Y. Choi and B. S. Kim, "Accelerated bonelike apatite growth on porous polymer/ceramic composite scaffolds in vitro", *Tissue Engineering*, vol. 12, no. 10, pp. 2997-3006, 2006.
- [23] J. Wang, L. Qu, X. Meng, J. Gao, H. Li and G. Wen, "Preparation and biological properties of PLLA/ β -TCP composite reinforced by chitosan fibers", *Biomedical Materials*, vol.3, no. 2, pp. 1-5, 2008.
- [24] N.F. Ishak, Z Mustafa, R. Othman, S.H. Sheikh, Md Fadzullah and A.R. Mahamad Sahab, "Effect of sintering on the physical properties of porous β -TCP scaffolds," in Proceeding of Mechanical Engineering Research Day, Malacca, Malaysia, 2016, pp. 135-136.
- [25] T. Kokubo, H. Takadama, "How useful is SBF in predicting in vivo bone bioactivity?", *Biomaterials*, vol. 27, no. 15, pp. 2907-2915, 2006.
- [26] W.Y. Lai, Y.W. Chen, C.T. Kao, T.T. Hsu, T.H. Huang and M.Y. Shie, "Human dental pulp cells responses to apatite precipitation from dicalcium silicates", *Materials*, vol. 8, no. 7, pp. 4491-4504, 2015.
- [27] Y. Kang, G. Yin, K. Wang, L. Luo, L. Liao and Y. Yao, "A study of bone-like apatite formation on β -TCP/PLLA scaffold in static and dynamic Simulated Body Fluid", *Key Engineering Materials*, vol. 332, pp. 483-486, 2007.
- [28] J. Nourmohammadi, S. Shahriarpanah, N. Asadzadehzanjani, S. Khaleghpanah and S. Heidari, "Biomimetic apatite layer formation on a novel citrate starch scaffold suitable for bone tissue engineering applications", *Starch/Stärke*, vol. 68, no. 11-12, pp. 1275-128, 2016.
- [29] N.F. Ishak, Z. Mustafa, R. Othman and N. Ahmad, "Morphological studies of porous beta-tricalcium phosphate scaffold using sacrificial template method" in Proceeding of Innovative Research and Industrial Dialogue '16, Malacca, Malaysia, 2017, pp. 171-172.
- [30] F. Barrere, P. Layrolle, C.A van Blitterswijk and K. de Groot, "Biomimetic calcium phosphate coating on Ti6Al4V: a crystal growth study of octacalcium phosphate and inhibition by Mg^{2+} and HCO_3^- ", *Bone*, vol. 25, no. 2, pp. 107S-111S, 1999.
- [31] R. Fresa, A. Costantini, A. Buri and F. Branda, "Apatite formation on $(2-x) CaO \cdot x/3 M_2O_3 \cdot 2SiO_2$ glasses (M=La, Y; $0 \leq x \leq 0.6$) in a simulated body fluid", *Biomaterials*, vol. 16, no. 16, pp. 1249-1253, 1995.
- [32] J. Weng, Q. Liu, J.G.C. Wolke, X. Zhang and K. de Groot, "Formation and characteristics of the apatite layer on plasma sprayed hydroxyapatite coating in simulated body fluid", *Biomaterials*, vol. 18, no. 15, pp. 1027-1035, 1997.
- [33] S.H. Rhee, Y. Suetsugu and J. Tanaka, "Biomimetic configurational arrays of hydroxyapatite nanocrystals on bioorganics", *Biomaterials*, vol. 22, no. 21, pp. 2843-2847, 2001.