

DC inline plane test of silicone rubber samples with different filler for high-voltage insulation

Nurbahirah Norddin¹, Intan Mastura Saadon², Najwa Kamarudin³, Norain Rahim⁴,
Jeefferie bin Abd Razak⁵

^{1,2,4}Faculty of Engineering Technology, Universiti Teknikal Malaysia Melaka (UTeM), Malaysia

^{3,5}Faculty of Manufacturing Engineering, Universiti Teknikal Malaysia Melaka (UTeM), Malaysia

Article Info

Article history:

Received Aug 27, 2019

Revised Oct 29, 2019

Accepted Nov 14, 2019

Keywords:

Calcium carbonate

High voltage

Outdoor insulation

Silica

Silicone rubber

Wollastonite

ABSTRACT

This paper is about preparation of silicone rubber (SiR) samples with different filler for high-voltage insulation purpose. The fillers used were silica from waste glass, calcium carbonate from cockle shell, silica/calcium carbonate and wollastonite. All the fillers were crushed into powder and undergo internal mixer and hot press as a material preparation. It was expected that the combination of filler with silicone rubber would give better result when experiencing ageing process. The direct current (DC) inclined plane test was used to investigate the tracking and erosion on silicone rubber composites. The tracking length was observed between the top and bottom electrode. Comparison would then be made between the silicone rubbers with different fillers based on the result obtained from the experiment.

Copyright © 2020 Institute of Advanced Engineering and Science.
All rights reserved.

Corresponding Author:

Nurbahirah Norddin,
Faculty of Engineering Technology,
Universiti Teknikal Malaysia Melaka (UTeM),
Hang Tuah Jaya, 76100 Durian Tunggal, Melaka, Malaysia.
Email: nurbahirah@utem.edu.my

1. INTRODUCTION

Silicone rubber (SiR) insulators have been the chosen candidates for outdoor high voltage applications, generally due to better performance. However, SiR is liable to long term aging effects. In pollution area where outdoor insulation housing is subject to dry-band arcing (DBA), power supply tends to be interrupted once SiR erodes leading to insulation failure [1]. Before this, composite insulator types used as a choice that is capable as a most advance dielectric insulator in future because of its capability as a good insulator [2].

The properties of composite designs which have lighter weight, more toughness, more seismic performance make it more flexibility compared to ceramic insulator. All those features will reduce installation cost, better endurance and offer better line design. The researchers and common industrial practitioners have various of method to fabricate silicon rubber with filler. As mention in [3-5] to determine the level of material degradation the surface potential decay measurement on the surface in-service aged composite insulator sheds can be used.

Basically, to increase the performance of the polymeric composite properties there are reinforcement's material are regularly used which is also to reduce the material cost. Silica, calcium carbonate and Wollastonite is the fillers that mostly been used for appliants of electrical insulation. Silica from waste glass is a very solid material that possesses an amorphous or non-crystalline [6-8]. High voltage transmission mostly use silica glass as a filler to create best insulator to fulfill high quality electrically insulating materials with excellent optical, thermal, electrical, mechanical, and other properties [9].

2. RESEARCH METHODOLOGY

This research focus on the performance of silicone rubber filled silica, calcium carbonate, calcium carbonate and wollastonite as mineral based fillers systems for high voltage insulators application. The fillers are derived from waste resources of silica form waste glass while calcium carbonate from the cockle shell. The formulations of fillers are consisted of several percent of it. The composites will be prepared by using an internal mixer and will undergo hot pressing. Direct current (DC) Inclined Plane (IP) tracking test will be done on the samples to investigate the tracking and erosion behavior [10]. The procedures for this research shown in Figure 1.

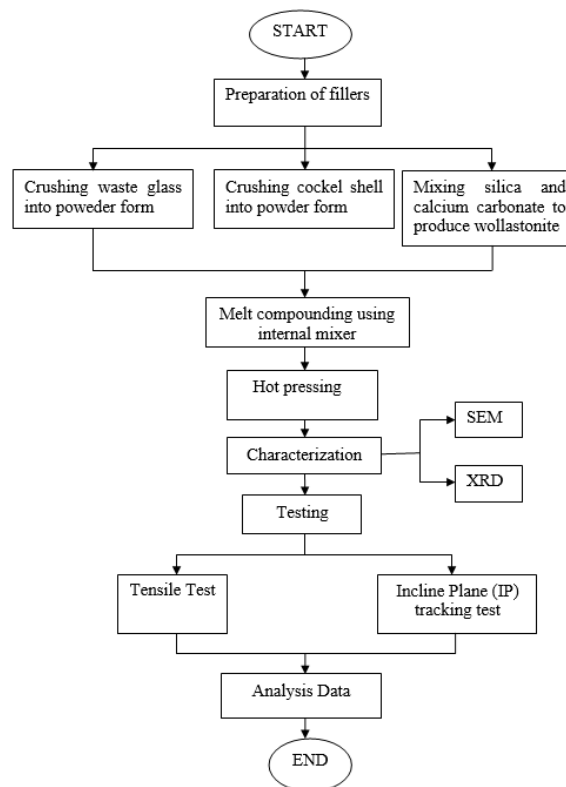


Figure 1. Procedures for this research

3. MATERIAL PREPARATION

Waste glass produces silica, cockle shells create calcium carbonate used to act as filler. The first step is naturally cockle shell being washed properly to clean it from dirt and it been dried for 24 hours in an oven operated at 80°C. then, waste glass material will be pulverize using crusher machine and the cockle shell will be blended into granule form. It is to make sure it be in powder form. Waste glass produces silica, cockle shells create calcium carbonate used to act as filler. The first step is naturally cockle shell being washed properly to clean it from dirt and it been dried for 24 hours in an oven operated at 80°C. Then, waste glass material will be crush using crusher machine and the cockle shell will be blended into granule form. Two opposing cycle was used in Horizontal Mill Machine. The machine operates for 30 minutes each cycle at 400 rpm, with 15 minutes resting time in between. This process to make sure cockle shell and waste glass samples can be transformed into powder form.

4. PREPARATION OF WOLLASTONITE

Two main elements in the production of wollastonite samples there are Calcium Oxide CaO and Silica SiO₂ [10, 11]. Calcium carbonate and silica by weighing both using ratio 48.3%: 51.7% and go through ball milling process at 20 rpm for 45 minutes. Mixture of the calcium carbonate and silica powder is important to this process to make sure it turn into homogeneous form. Then, the mixture will be calcined with setting of 10°C/min heat up, temperature 1000°C in 3.5 hours and 10°C/minutes for cooling process. The chemical

composition of composite of glass and cockle shell after calcination process was affirm using X-ray diffraction (X-RD) technique. Silicon rubber, filler, dicumyl peroxide and color (black) was added for each samples. The step of preparing the wollastonite was shown in Figure 2.

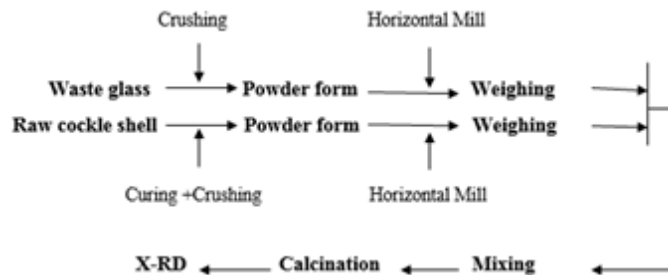


Figure 2. Preparation for wollastonite

5. PREPARATION OF WOLLASTONITE

The internal mixer utilized at roller rotor speed of 50 rpm and temperature is set at 180°C to make sure the mixture of composite was scatter uniformly whole the formulation. The amount of composite is approximately 50g per run for each mixture. Internal mixer used at Agensi Nuklear Malaysia (Nuklear Malaysia Agency) to mix mixture of the composite for 7 minutes shown in Figure 3. The dimension of of 50mm x 120mm x 6mm of the composites compressed using hot press machine with a pressure 70 kg/cm³ and temperature of 185° for 15 minutes compression period. Then, the machine with internal water flow for 12 minutes cooled the composite sheet that has been produced. The flat sheet sample with the thickness of 6mm have been produced.



Figure 3. Internal mixer

6. RESULT

Each of the filler was add into silicone rubber with different percentage that is 5%, 10%, 20%, 30% and 40%. Figure 4 shows example of silicon rubber samples with 5%, 10% and 20% wollastonite filler.

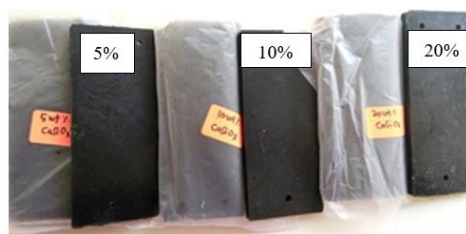


Figure 4. Example of silicon rubber samples with 5%, 10% and 20% wollastonite filler

All the sample will be tested using DC incline plane test (IPT) according to BS EN60587 shown in Figure 5.

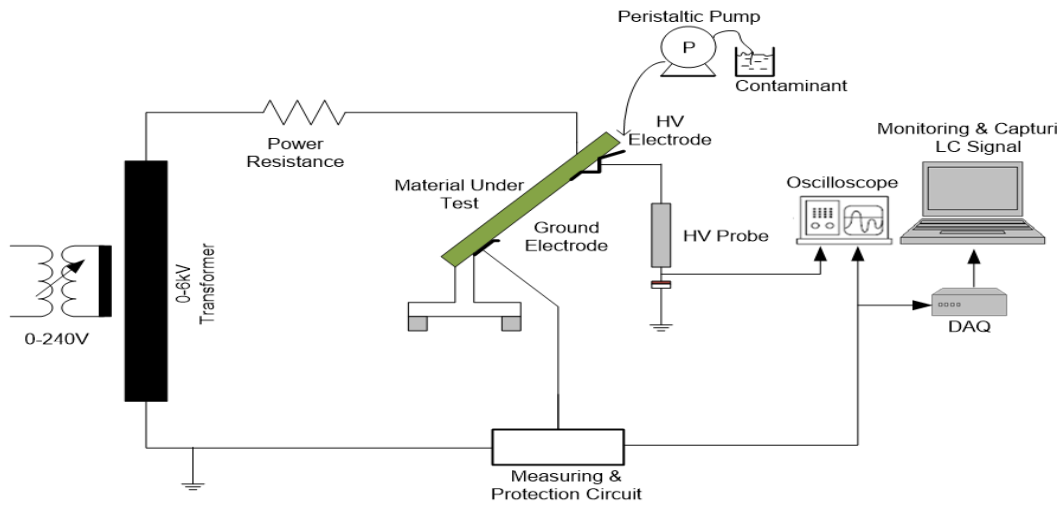


Figure 5. Schematic of inclined plane test 12 [12]

5.1. Result from DC Incline Plane Test (IPT)

The sample for 30% were tested using 3.5kV DC incline plane test. Figure 6 shows the spark on the surface of insulator start during 15 minutes test and erosion and tracking start on insulator surface after 50 minutes of test.

After 1 hour and a half the test was stopped and the tracking length on the insulator surface was measured. The tracking length was around 4.5cm. The condition for insulator with 30% of wollastonite and the tracking length shown in Figure 7(a) and 7(b). Scanning Electron Microscopy (SEM) was conducted after DC incline plane test was done. The SEM conducted to make analysis of surface morphology of the insulator housing can be effectively used as a tool for the measurement of extent of degradation during aging [13, 14].

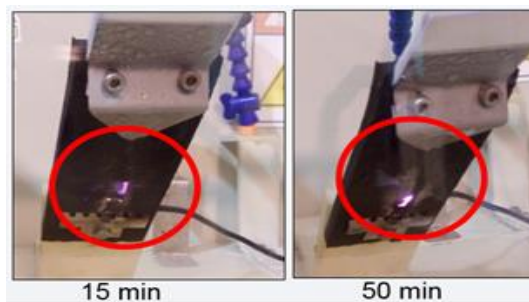


Figure 6. Spark on insulator surface during DC incline plane test (IPT)

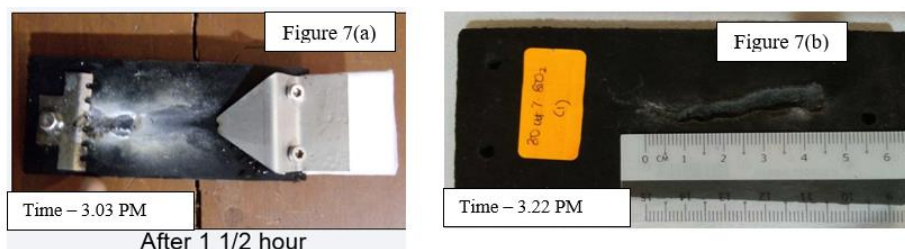


Figure 7(a). Condition insulator with 30% wollastonite filler after DC IPT test and (b). Tracking length on the insulator

Beside the condition of the surface on insulator were tested. The waveform during DC incline test were also obtained and saved using LabVIEW. Table 1 shows the condition for the insulator tested using different voltages.

Table 1. Surface and Condition Observation of Insulator using Different Voltages

Type of Wave	Voltage used (kV)	Surface and Condition Observation
Capacitive	0 - 1	Nothing happen
Resistive	1 - 3	Smoke with slow arching sound
Symmetrical	3.5 - 4	Spark of leakage current with smoke and arching sound
Unsymmetrical	4 - 5	Spark of leakage current separated between low and high part of the insulator surface

Leakage current data during different times which start during 3.03 PM and with voltage of 2.5kV that captured using LabVIEW then been evaluated using MATLAB shown in Figure 8. The result of waveform shows the difference between AC and DC waveform to the leakage current [15].

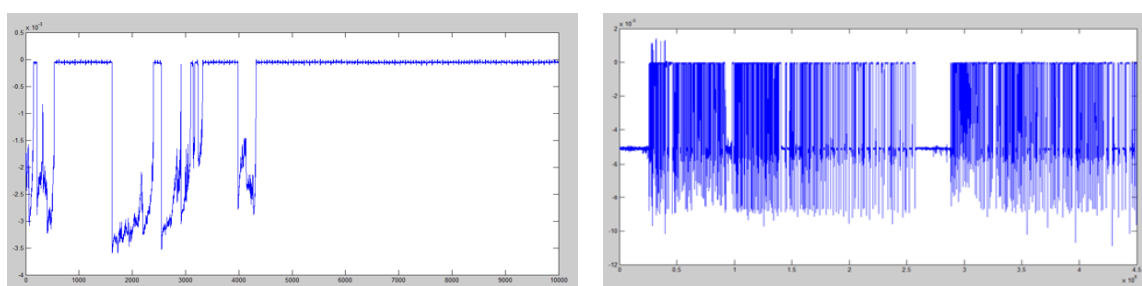


Figure 8. Leakage current data during different time

The samples of different filler into silicone rubber is prepared. There are several investigations that will be done to check combination of filler and SiR as matrix could improve the tracking and erosion behavior. DC incline plane test also could successfully indicate an enhanced interaction between fillers and SiR [16-19]. Leakage current of DC incline plane test can be evaluated and can show the surface condition for the insulator [20]. There are also several other methods that can be shown by using the leakage current waveform obtain such as using total harmonic distortion as mention in [21-24].

ACKNOWLEDGEMENTS

The authors wish to acknowledge the Ministry of Education (KPT), Malaysia and Universiti Teknikal Malaysia Melaka, for supporting this research financially under Grants RAGS/1/2015/TK0/FTK/02/B000120.

REFERENCES

- [1] R. A. Ghunem, S. H. Jayaram, and E. A. Cherney, "Erosion of silicone rubber composites in the AC and DC inclined plane tests," *IEEE Trans. Dielectr. Electr. Insul.* vol. 20, no. 1, pp. 229–236, 2013.
- [2] G. Momen and M. Farzaneh, "Survey of Micro Nano Filler Use To Improve Silicone Rubber for Outdoor Insulators," vol. 27, pp. 1–13, 2011.
- [3] C. Yuan, C. Xie, L. Li, X. Xu, S. M. Gubanski, "Surface Potential Decay on Material Samples Taken From In-service Aged HVDC Silicone Rubber Composite Insulators" 2017.
- [4] Ghosh, Dipankar & Khastgir, Dipak. (2018). "Degradation and Stability of Polymeric High-Voltage Insulators and Prediction of Their Service Life through Environmental and Accelerated Aging Processes." *ACS Omega*. 3. 11317-11330. 10.1021/acsomega.8b01560
- [5] T. Tokoro, S. Kojima and M. Nagao, "Effect of surface condition on the evaluation of hydrophobicity of polymer insulator," Proceedings of 2011 International Symposium on Electrical Insulating Materials, Kyoto, 2011, pp. 451-454. doi: 10.1109/ISEIM.2011.6826310
- [6] A. Aman, M. M. Yaacob, M. A. Alsaedi, and K. A. Ibrahim, "Polymeric composite based on waste material for high voltage outdoor application," *Int. J. Electr. Power Energy Syst.*, vol. 45, no. 1, pp. 346–352, 2013.
- [7] Zhang Xianyou and Zhang Xiao Hong, "Study on the properties of the wollastonite short fiber-PVC cable insulation composition," Conference Record of the 1996 IEEE International Symposium on Electrical Insulation, Montreal, Quebec, Canada, 1996, pp. 712-715 vol.2.

- [8] Mousa, Mohammed Imran, Zulkurnain Abdul-Malek, and I. M. Zainab. "Aging Detection of Glass Disc Insulator by Using Infrared Camera." *Indonesian Journal of Electrical Engineering and Computer Science* 6.3 (2017): 520-527.
- [9] I. Fanderlik, Silica glass and its application, vol. V, no. 11. 1991.
- [10] A. Aman and M. Yaacob, "Optimization of dielectric strength of polymeric composite insulation using Response Surface Methodology," 2012 IEEE International Conference on Power System Technology (POWERCON), Auckland, 2012, pp. 1-5.
- [11] N. J. Hadi, A. Al-kawaz, A. F. Hamza and D. Jawad Mohamed, "New Approach to Predict Mechanical and Tribological Behaviour Through Rheological Properties of Polypropylene Composites," 2018 9th International Conference on Mechanical and Aerospace Engineering (ICMAE), Budapest, 2018, pp. 556-560
- [12] N. Q. Z. Abidin, a R. Abdullah, N. Norddin, a Aman, and K. a Ibrahim, "Leakage Current Analysis on Polymeric Surface Condition using Time-Frequency Distribution," 2012 IEEE Int. Power Eng. Optim. Conf., no. June, pp. 171–175, 2012.
- [13] A. R. Verma and B. S. Reddy, "Multistress aging studies on HTV silicone rubber insulators," 2017 3rd International Conference on Condition Assessment Techniques in Electrical Systems (CATCON), Rupnagar, 2017, pp. 151-155.
- [14] F. Wang, G. Wen, F. Fan, T. Zhang and J. Li, "Turn hydrophobic to superhydrophobic of composite insulators by surface fluorination," 2016 IEEE International Conference on High Voltage Engineering and Application (ICHVE), Chengdu, 2016, pp. 1-4.
- [15] Aphane, Maesela & Mafora, B & West, Nicholas. (2018). "A Comparison of AC, DC, and Hybrid AC/DC Inclined-Plane Tests on Silicone Rubber Coated Insulators."
- [16] A. PN, K. K and M. Naskar, "A Study on AC/DC Tracking and Erosion Resistance of Liquid Silicone Rubber," 2019 International Conference on High Voltage Engineering and Technology (ICHVET), Hyderabad, India, 2019, pp. 1-5. doi: 10.1109/ICHVET.2019.8724382
- [17] Bruce, G.P. & Rowland, Simon & Krivda, Andrej. (2008). "DC inclined-plane testing of silicone rubber formulations." 196 - 199. 10.1109/CEIDP.2008.4772788.
- [18] Ghunem, Refat & Jayaram, S. & Cherney, E.A. (2012). "Statistical indicators of silicone rubber erosion in the DC inclined plane test." Annual Report - Conference on Electrical Insulation and Dielectric Phenomena, CEIDP. 737-740. 10.1109/CEIDP.2012.6378886.
- [19] Z. Qiu, J. Ruan, D. Huang, X. Li, F. Wang and W. Yao, "Study on glaze electrical erosion characteristics of porcelain post insulator by using inclined plane and graphite-layer-based method," in *IEEE Transactions on Dielectrics and Electrical Insulation*, vol. 22, no. 6, pp. 3385-3394, December 2015.
- [20] Mousa, Mohammed Imran, Zulkurnain Abdul-Malek, and I. M. Zainab. "Leakage Current Based Thermal Modeling of Glass Disc Insulator Surface." *Indonesian Journal of Electrical Engineering and Computer Science* 6.3 (2017): 504-512.
- [21] Aswal, Pankaj, et al. "Total Harmonic distortion at fault in RLC load." *Indonesian Journal of Electrical Engineering and Computer Science* 4.2 (2016): 325-332.
- [22] Ibrahim, Visa Musa, Zulkurnain Abdul-Malek, and Nor Asiah Muhamad. "Status review on gas insulated switchgear partial discharge diagnostic technique for preventive Maintenance." *Indonesian Journal of Electrical Engineering and Computer Science* 7.1 (2017): 9-17.
- [23] Gorantla, Satyanarayan, and Goli Ravi Kumar. "Harmonic Compensation using STATCOM for SEIG Feeding Single-Phase Load Connected between Different Phases." *Indonesian Journal of Electrical Engineering and Computer Science* 6.3 (2017): 489-496.
- [24] Hussin, A. S., et al. "Harmonic Load Diagnostic Techniques and Methodologies: A." *Indonesian Journal of Electrical Engineering and Computer Science* 9.3 (2018): 690-695.

BIBLIOGRAPHY OF AUTHORS



Nurbahirah Norddin received her B. Eng degree in Electrical Engineering (Power Electronic & Drives) in 2011 and M. Eng in Electrical Engineering from Universiti Teknikal Malaysia Melaka (UTeM) in 2014. Currently she is a lecturer at Universiti Teknikal Malaysia Melaka (UTeM) and her interest involves high voltage and signal processing.



Intan Mastura Saadon received her B. Eng degree in Electrical Engineering (Instrumentation & Control) in 2008 from Universiti Teknologi Malaysia (UTM) and M. Eng in Electrical Engineering from Universiti Malaya (UM). Currently she is a lecturer at Universiti Teknikal Malaysia Melaka (UTeM) and her interest involves renewable energy



Najwa Kamarudin is graduate research assistant for this project and Master student from Faculty of Manufacturing Engineering, Universiti Teknikal Malaysia Melaka (UTeM), Malacca, Malaysia



Norain Rahim received her B. Eng degree in Electrical Engineering from Universiti Teknologi Malaysia (UTM) and M. Eng in Electrical Engineering from Universiti Malaya (UM). Currently she is a lecturer at Universiti Teknikal Malaysia Melaka (UTeM).



Dr. Jeefferie bin Abd Razak is currently a lecturer from Faculty of Manufacturing Engineering, Universiti Teknikal Malaysia Melaka (UTeM), Malacca, Malaysia